

Test Report

No.: SDHL1603002546FT

Date: Aug.17, 2016

Page 1 of 47

ZHONG SHAN SHI SONGLIN FURNITURE CO. LTD
B BLOCK, JINLI INDUSTRIAL ZONE SANXING ROAD, SANJIAO TOWN,
ZHONGSHAN CITY, GUANGDONG PROV., CHINA 528400

The following sample(s) was / were submitted and identified on behalf of the client as:

Sample Description : OFFICE CHAIR
Buyer Item No. : SL-F13
Manufacturer : SONGLIN
Sample Receiving Date : Mar.08, 2016
Test Performing Date : Mar.08, 2016 to Aug.17, 2016

Test Result Summary

Test(s) Requested	Result(s)
Selected tests of OD-FT0001-General Office Chairs(BIFMA X5.1)-US-CAN-V4.0	: FAIL (See Summary 1, 2)
Summary:	
1. The submitted fabric could not suffer 300 cycles before end point during the Abrasion Resistance test.	
2. The fabric (D) rated as class 3.0 during the Colorfastness to Water Spotting test and less the minimum requirement of class 3.5.	
3. For further details, please refer to the following page(s).	

Signed for and on behalf of
Shunde Branch
SGS-CSTC Co., Ltd.



Bill Wang
Approved signatory



This document is issued by the Company subject to its General Conditions of Service printed overleaf, available on request or accessible at <http://www.sgs.com/en/Terms-and-Conditions.aspx> and, for electronic format documents, subject to Terms and Conditions for Electronic Documents at <http://www.sgs.com/en/Terms-and-Conditions/Terms-e-Documents.aspx>. Attention is drawn to the limitation of liability, indemnification and jurisdiction issues defined therein. Any holder of this document is advised that information contained hereon reflects the Company's findings at the time of its intervention only and within the limits of Client's instructions, if any. The Company's sole responsibility is to its Client and this document does not exonerate parties to a transaction from exercising all their rights and obligations under the transaction documents. This document cannot be reproduced except in full, without prior written approval of the Company. Any unauthorized alteration, forgery or falsification of the content or appearance of this document is unlawful and offenders may be prosecuted to the fullest extent of the law. Unless otherwise stated the results shown in this test report refer only to the sample(s) tested and such sample(s) are retained for 30 days only.

Attention: To check the authenticity of testing / inspection report & certificate, please contact us at telephone: (86-755) 8307 1443, or email: CN.Doccheck@sgs.com

1/F, 1st Building, European Industrial Park, No.1 Shunshen Road, Wusha Section, Daliang Town, Shunde, Foshan, Guangdong, China 528333 t (86-757)22805888 f (86-757)22805858 www.sgs.com.cn
中国·广东·佛山市顺德区大良街道办事处五沙顺和南路1号欧洲工业园一号厂房首层 邮编: 528333 t (86-757)22805888 f (86-757)22805858 e sgs.china@sgs.com

Test Result Details
Protocol No.: Selected tests of OD-FT0001-General Office Chairs(BIFMA X5.1)-US-CAN-V4.0

Test Property	Test Method	Test Principle / Requirements	Results
SCOPE: This protocol is applicable for the general-purpose office chairs are normally used in an office environment, e.g. executive/management, task/secretarial, side/guest chairs, stacking chairs, tablet arm chairs and stools.(Use this protocol as the default one if Weight Capability is not specified in PPT Sheet or Packaging/Instruction/Labelling)			
REFERENCE: Where there are no applicable US standards, SGS has chosen the most relevant International, National standards to assess the product safety and performance. For undated references, the latest edition of the referenced document (including any amendments) applies.			
NOTE: Gas Lift Design: If the gas lift is welded to the seat plate, DO NOT PROCEED WITH TESTING THE PRODUCT, FAIL THE TEST & IMMEDIATELY ISSUE THE TEST REPORT.			
REGULATORY SUPPLEMENT PROTOCOLS			
* Children's Product (Non-toys)	Applicable sections from SGS Protocol OD-1015	Product to be tested against all applicable requirements of this protocol.	Not applicable
* Labeling Requirement	SGS Protocol OD-LB0001	Product to be tested against all applicable requirements of this protocol.	Not requested
* Chemical Requirement	Applicable sections from SGS Protocol OD-CM0001	Product to be tested against all applicable requirements of this protocol complying with the regulation of the general product in the destination countries.	/ See SGS Protocol OD-CM0001
* Bedding or upholstered furniture	SU0002-US-CAN SU0003-US-CAN	Bedding or upholstered furniture shall comply with the labelling, flammability and chemical requirement in accordance with the regulations.	Pass See SU0002-US-CAN & SU0003-US-CAN
HAZARDS			
Sharp points / Sharp edges	16 CFR 1500.48/49 (Mod.)	Shall have no sharp points/edges, other than those required for function. Modification = Expanded scope of to include other products.	Pass

Test Property	Test Method	Test Principle / Requirements	Results
Corners and edges, trapping, pinching and shearing	EN 1335-2:2009, 4.1.1	<p>The chair shall be so designed as to minimise the risk of injury to the user. All parts of the chair with which the user comes into contact during intended use, shall be so designed that physical injury and damage to property are avoided.</p> <ul style="list-style-type: none"> - the safety distance of accessible movable parts is either ≤ 8 mm or ≥ 25 mm in any position during movement; - accessible corners are rounded with minimum 2 mm radius; - the edges of the seat, back rest and arm rests which are in contact with the user when sitting in the chair are rounded with minimum 2 mm radius; - the edges of handles are rounded with minimum 2 mm radius in the direction of the force applied; - all other edges are free from burrs and rounded or chamfered; - the ends of accessible hollow components are closed or capped. 	Pass
Adjusting devices	EN 1335-2:2009, 4.1.2	<p>Movable and adjustable parts shall be designed so that injuries and inadvertent operation are avoided. It shall be possible to operate the adjusting devices from sitting position in the chair.</p>	Pass
PHYSICAL CHARACTERISTICS REQUIREMENTS			
Overall Dimensions	Standard measure	Report overall dimensions; shall meet label claims (if applicable) (+/- 0.50 inches). Report in primary units as claimed.	<p>/</p> <p>No claim; Actual: 28.94" W x 27.76" D x 42.52~46.26" H</p>
Weight	Standard measure	Report overall weight; shall meet label claims (if applicable). Report in primary units as claimed. (-10 / +10%)	<p>No claim; Actual: 49.16 lbs</p>
Seat dimension- length x width	Standard measure	Report actual	Actual: 19.88" W x 20.08" D
Seat dimension- height	Standard measure	Report actual in Max. and Min.	Actual: 19.49" ~ 23.23" H
Foam Density	Standard measure	Report actual and cross check with specifications	Actual: 58.3 kg/m ³
Type of chair	Visual check/Actual use	Report actual type of chair according to BIFMA X5.1-2011.	Actual: Type I & III



This document is issued by the Company subject to its General Conditions of Service printed overleaf, available on request or accessible at <http://www.sgs.com/en/Terms-and-Conditions.aspx> and, for electronic format documents, subject to Terms and Conditions for Electronic Documents at <http://www.sgs.com/en/Terms-and-Conditions/Terms-e-Documents.aspx>. Attention is drawn to the limitation of liability, indemnification and jurisdiction issues defined therein. Any holder of this document is advised that information contained hereon reflects the Company's findings at the time of its intervention only and within the limits of Client's instructions, if any. The Company's sole responsibility is to its Client and this document does not exonerate parties to a transaction from exercising all their rights and obligations under the transaction documents. This document cannot be reproduced except in full, without prior written approval of the Company. Any unauthorized alteration, forgery or falsification of the content or appearance of this document is unlawful and offenders may be prosecuted to the fullest extent of the law. Unless otherwise stated the results shown in this test report refer only to the sample(s) tested and such sample(s) are retained for 30 days only.

Attention: To check the authenticity of testing /inspection report & certificate, please contact us at telephone: (86-755) 8307 1443, or email: CN.Doccheck@sgs.com

11F, 1st Building European Industrial Park, No.1 Shunhuan Road, Wusha Section, Daliang Town, Shunde, Foshan, Guangdong, China 528333 t (86-757)22805888 f (86-757)22805858 www.sgsgroup.com.cn
中国·广东·佛山市顺德区大良街道办事处五沙顺和南路1号欧洲工业园一号楼首层 邮编: 528333 t (86-757)22805888 f (86-757)22805858 e sgs.china@sgs.com

Test Property	Test Method	Test Principle / Requirements	Results
Type of support	Visual check/Actual use	Report actual, e.g.: - Pedestal base with/without casters or glides - Legs with/without casters or glides. - Cylinder or others	Actual: Pedestal base with casters Cylinder
Type of seat	Visual check/Actual use	Report actual; e.g.: - Tilting or non-tilting - Adjustable or non adjustable in seat height - Adjustable or non adjustable in seat depth	Actual: Tilting Adjustable in seat height Adjustable in seat depth
Type of back	Visual check/Actual use	Report actual; e.g.: - Tilting or non-tilting - Adjustable or non adjustable in back height	Actual: Tilting Non adjustable in back height
Type of arm	Visual check/Actual use	Report actual; e.g.: - Adjustable or non adjustable in height, - Adjustable or non adjustable in angle, - Adjustable or non adjustable in depth	Actual: Adjustable in height Adjustable in angle Adjustable in depth
CONSTRUCTION & WORKMANSHIP REQUIREMENTS			
Defects	Visual	Shall have no discernible surface degradation, including crazing, shivering, denting, bubbles, cracks, stains, deformations, chips, fractures, heavy lines, waves, shear marks, scratches, scuff marks, indentations, or blisters. Shall have no components missing, malformed, and/or fractured. Sample is checked for workmanship in "as received" condition.	Pass
Fabric defects	ASTM D3990-99 (R08)	No major defects / two minor defects (Max.)	Pass
Fabric evenness of color	ASTM D3990-99 (R08)	Shall provide uniform color	Pass
Visual quality (For Thomasville brand)	Visual check/Actual use	Verify that the overall appearance complies with the initial design. This applies in particular to high end products. Check all seams and stitchings. No wrinkles or other irregularities shall be visible. Backrest shall be even, square and level. Finishing of wooden and metal parts shall be impeccable. All surfaces shall be smooth, well sanded and properly finished.	Not applicable

Test Property	Test Method	Test Principle / Requirements	Results
Ergonomic checklist	OD Requirement / Visual Check/ Actual use	<p>If chair is claimed to be Ergonomic, the technician is to verify chair meets 7 of the below features.</p> <p>Tension Adjustment Chair Tilt Lock Height adjustable Back Height Adjustment Seat Depth/Pan Adjustment Forward Seat Angle Back Angle Adjustment Adjustable Arms Arm Angle Tilt Synchronic Tilt Movement Waterfall Seat Edge Properly Contoured Cushions Center Tilt Movement Lumbar Support Width Adjustable Arms 5 Pedestal Base</p> <p>Record which features are met. Seven (7) is required for a pass.</p>	No claim Not applicable
Textile material claims vs bom - for leather or pvc or fabric etc	OD Requirement / Visual Check/ Actual use	<p>[Office Depot requirement]</p> <p>BOM documentation must coincide with retail packaging label claims. For example, if retail packaging claims a chair to be "leather", then all upholstered components (seat, back, arms, sides, piping, & headrest) must indeed be leather.</p> <p>BOM (bill of materials) to be requested from product vendor / manufacturer. Rate as FAIL if BOM does not coincide with label claims.</p> <p>NOTE: A material that contains ground, pulverized, shredded, reconstituted or bonded leather cannot be represented as being wholly leather. Adequate disclosure of these leather types must be present.</p>	Pass Approved by ODM
PERFORMANCE REQUIREMENTS			
General			

Test Property	Test Method	Test Principle / Requirements	Results
Ease of assembly	Actual use	Shall provide ease of assembly and shall be accurate	Pass
Product specification (SPEC)	OD Requirement	Lab must request Specification from the Office Depot US Engineer assigned to the product category and must confirm specifications against testing results from the provided sample. If Specification is not provided or specification values do not match test results the report rating shall be Fail.	Pass Approved by ODM
Actual use - functionality – not covered by other tests	Actual use	Shall function as intended as received. Report details of evaluation (features tested / methods used / materials used / etc.) Report any features not evaluated.	Pass
Comfortability - seating - with labeled capacity	Actual use	Shall be comfortable	Pass
Effects of extreme temperature change	Environmental	Shall exhibit no visual changes after 4 hours exposure at 0 °F and 120 °F respectively.	Pass
Effects of humidity exposure	Environmental	Shall exhibit no visual changes, functionality failure, structural failure or permanent deformation after an exposure at 95% relative humidity and 100 °F for 4 hours. Report if entire item was placed in the chamber or if only certain pieces/sections. If pieces/sections were tested, list which pieces and include before and after pictures of the pieces.	Pass
Seating - front seating capacity	Actual use	No failure under 300 lb loading at edge (6 in)	Pass
Cycle test - headrest	Actual use	No damage - 100 repeated up / down cycles	Not applicable
Stalled Rotor Test (Only applicable for massage chair)	In House Method	One of the massager's motor is taken for this specific test. It's motor shall be stalled for 30 seconds. The motor shall not become a fire hazard.	Not applicable
Switch On-Off (Only for massage chair)	In House Method	Should not have abnormal condition occurred during 100 On-Off cycles.	Not applicable
Resistance To Corrosion Metal Parts (Only requested by ODM)	ASTM B117	After 24 hours in 1% salt spray (fog), there shall be no signs of major corrosion.	PASS See Result #2
Headrest Static Load Test (If applicable)	In House Method	Apply a backward force of 200 N (45 lbs) to the center of headrest, using a loading pad 100 mm in diameter, for 1 min. No loss of serviceability after tested.	Not applicable



This document is issued by the Company subject to its General Conditions of Service printed overleaf, available on request or accessible at <http://www.sgs.com/en/Terms-and-Conditions.aspx> and, for electronic format documents, subject to Terms and Conditions for Electronic Documents at <http://www.sgs.com/en/Terms-and-Conditions/Terms-e-Documents.aspx>. Attention is drawn to the limitation of liability, indemnification and jurisdiction issues defined therein. Any holder of this document is advised that information contained hereon reflects the Company's findings at the time of its intervention only and within the limits of Client's instructions, if any. The Company's sole responsibility is to its Client and this document does not exonerate parties to a transaction from exercising all their rights and obligations under the transaction documents. This document cannot be reproduced except in full, without prior written approval of the Company. Any unauthorized alteration, forgery or falsification of the content or appearance of this document is unlawful and offenders may be prosecuted to the fullest extent of the law. Unless otherwise stated the results shown in this test report refer only to the sample(s) tested and such sample(s) are retained for 30 days only.

Attention: To check the authenticity of testing /inspection report & certificate, please contact us at telephone: (86-755) 8307 1443, or email: CN.Doccheck@sgs.com

1/F, 1st Building European Industrial Park, No.1 Shunshen Road, Wusha Section, Daliang Town, Shunde, Foshan, Guangdong, China 528333 t (86-757)22805888 f (86-757)22805858 www.sgsgroup.com.cn
中国·广东·佛山市顺德区大良街道办事处五沙顺和南路1号欧洲工业园一号楼首层 邮编: 528333 t (86-757)22805888 f (86-757)22805858 e sgs.china@sgs.com

Test Property	Test Method	Test Principle / Requirements	Results
Adjusting and locking devices, e.g. Lumbar adjusting, Arm adjusting, seat adjusting, back adjusting, headrest adjusting etc. (If applicable)	Actual use	Movable and adjustable parts shall be so made that injuries are avoided, and inadvertent separation of parts is impossible. Adjustment controls shall be easily adjusted by the occupant from the seated position. The adjustable devices shall be no loss of serviceability after actual use of 100 cycles according to instruction.	Pass
Adhesion Test by 3M Transparent Tape 600 (For Paint, Coating and surface decorated) – If applicable	ASTM D3359 (Mod.)	Using 100-grid test method, each grid is 1 mm x 1 mm. after the test, no more than 10 grids of painting, powder coating or surface decorated are detached.	Pass
Moisture Content for Solid Wood Products	In house method	After placing the sample in a testing laboratory atmosphere for 48 hours, use a calibrated moisture meter, take 3 readings from different location on the sample, and calculate the average moisture content. OfficeMax requirement: Shall be less than 14%. As applicable to samples containing wood.	Not applicable
Protective Caps on Legs	Actual Use	Shall be non-marring	Not applicable
Strenght and durability (Test with reference to ANSI/BIFMA X5.1-2011) The general office chairs are classified as three types in ANSI/BIFMA X5.1-2011. For classification of types and features of chairs, please refer to Annex 1 . If a product can be classified as more than one chair type, it shall be tested under all applicable classifications. For example, a chair with a locking tilt mechanism would be classified as both a Type I (when the seat is unlocked) and Type III chair (when the seat is locked). It is not intended that all of the tests in this standard be conducted on a single unit. Please refer to the guide of sample distribution in Annex 2 .			
Back Strength Test - Static - Type I (Functional Load)	ANSI/BIFMA X5.1 -2011 Clause 5	No loss of serviceability when 890 N (200 lbs.) is applied for 1 min. Applied 90° to the back at 16 in. above the seat.	Pass
Back Strength Test – Static – Type I (Proof Load)	ANSI/BIFMA X5.1 -2011 Clause 5	No sudden and major change in the structural integrity (loss of serviceability is acceptable) when 1334 N (300 lbs.) is applied for 1 min. Applied 90° to the back at 16 in. above the seat.	Pass
Back Strength Test – Static – Type II & III (Functional Load)	ANSI/BIFMA X5.1 -2011 Clause 6	No loss of serviceability when 667 N (150 lbs.) is applied for 1 min. Applied 90° to the back at 16 in. above the seat.	Pass
Back Strength Test – Static – Type II & III (Proof Load)	ANSI/BIFMA X5.1 -2011 Clause 6	No sudden and major change in the structural integrity (loss of serviceability is acceptable) when 1112 N (250 lbs.) is applied for 1 min. Applied 90° to the back at 16 in. above the seat.	Pass

Test Property	Test Method	Test Principle / Requirements	Results
Base Test – Static	ANSI/BIFMA X5.1 -2011 Clause 7	No sudden and major change in the structural integrity under 11,100 N (2500 lbs.) compression for 1 min. The weight is then removed and reapplied for 1 min. The center column may not touch the test platform during load applications.	Pass
Drop Test – Dynamic (Functional Load)	ANSI/BIFMA X5.1 -2011 Clause 8	No loss of serviceability when 102kg (225 lbs.) weight free falls from 6 in height to the center of the seat.	Pass
Drop Test – Dynamic (Proof Load)	ANSI/BIFMA X5.1 -2011 Clause 8	No sudden and major change in the structural integrity (loss of serviceability is acceptable) when 136kg (300 lbs.) weight free falls from 6 in height to the center of the seat.	Pass
Swivel Test – Cyclic	ANSI/BIFMA X5.1 -2011 Clause 9	No loss of serviceability after 60,000 cycles of rotation (360°) under a 113kg (250 lbs.) load on the seat at its max. height. Seat shall then withstand another 60,000 cycles of rotation at its lowest seating position. Total 120,000 cycles.	Pass
Tilt Mechanism Test – Cyclic – Type I & II	ANSI/BIFMA X5.1 -2011 Clause 10	No loss of serviceability after 300,000 cycles under a 102kg (225 lbs.) load to the center of the seat	Pass
Seat Impact Test – Cyclic	ANSI/BIFMA X5.1 -2011 Clause 11.1	No loss of serviceability in 100,000 cycles impact. A weight of 57kg (125 lbs.) free falls onto the seat from 1.2 in. height.	Pass
Front Corner Load Ease Test – Cyclic – Off Center	ANSI/BIFMA X5.1 -2011 Clause 11.2	No loss of serviceability after load each seat front corner with 734N (165 lbs.) for 20,000 cycles, total 40,000 cycles. Note: this test is done after "Impact test" on the same sample.	Pass



This document is issued by the Company subject to its General Conditions of Service printed overleaf, available on request or accessible at <http://www.sgs.com/en/Terms-and-Conditions.aspx> and, for electronic format documents, subject to Terms and Conditions for Electronic Documents at <http://www.sgs.com/en/Terms-and-Conditions/Terms-e-Document.aspx>. Attention is drawn to the limitation of liability, indemnification and jurisdiction issues defined therein. Any holder of this document is advised that information contained hereon reflects the Company's findings at the time of its intervention only and within the limits of Client's instructions, if any. The Company's sole responsibility is to its Client and this document does not exonerate parties to a transaction from exercising all their rights and obligations under the transaction documents. This document cannot be reproduced except in full, without prior written approval of the Company. Any unauthorized alteration, forgery or falsification of the content or appearance of this document is unlawful and offenders may be prosecuted to the fullest extent of the law. Unless otherwise stated the results shown in this test report refer only to the sample(s) tested and such sample(s) are retained for 30 days only.

Attention: To check the authenticity of testing /inspection report & certificate, please contact us at telephone: (86-755) 8307 1443, or email: CN.Doccheck@sgs.com

1/F, 1st Building European Industrial Park, No.1 Shunshen Road, Wusha Section, Daliang Town, Shunde, Foshan, Guangdong, China 528333 t (86-757)22805888 f (86-757)22805858 www.sgsgroup.com.cn
中国·广东·佛山市顺德区大良街道办事处五沙顺和南路1号欧洲工业园一号楼首层 邮编: 528333 t (86-757)22805888 f (86-757)22805858 e sgs.china@sgs.com

Test Property	Test Method	Test Principle / Requirements	Results
Rear Stability Test for Type III Chairs	ANSI/BIFMA X5.1 -2011 Clause 12.3.1	<p>Place a support fixture made of a 1.5 mm \pm 0.4 mm (0.060 in. \pm 0.015 in.) thick polypropylene, 356 mm (14 in.) wide and 711 mm (28 in.) tall against the chair back so that it approximates the contour of the back. Load the chair with 6 disks (10 kg each). Place the first disk on the seat so it touches the support fixture. As each disk is added to the stack slide it along the lower disk until it contacts the support fixture. Apply a horizontal force to the highest disk. The location of the force application is 6 mm (0.25 in.) from the top of the disk. For chairs with seat height (as measured at the front of the bottom of the lowest disk when all disks are in the chair) less than 710 mm (28.0 in.), calculate the force as follows:</p> <ul style="list-style-type: none"> • $F = 0.1964 (1195 - H)$ Newton. H is the seat height in mm. • $[F = 1.1 (47 - H)$ pounds force.]. H is the seat height in inches. <p>For chairs with seat height equal to or greater than 710 mm (28.0 in.), a fixed force of 93 N (20.9 lbf.) shall be applied.</p> <p>The chair shall not tip over.</p>	Pass

Test Property	Test Method	Test Principle / Requirements	Results
	ANSI/BIFMA X5.1 -2011 Clause 12.3.2	Rear Stability Test for Type I and II Chairs Place a support fixture made of a 1.5 mm \pm 0.4 mm (0.060 in. \pm 0.015 in.) thick polypropylene, 356 mm (14 in.) wide and 711 mm (28 in.) tall against the chair back so that it approximates the contour of the back. Load the chair with 13 disks. Place the first disk on the seat so it touches the support fixture. As each disk is added to the stack slide it along the lower disk until it contacts the support fixture. If the chair does not tip over and the tilt mechanism does not tilt to its most rearward position (i.e., at its tilt stop) when the disks are placed in the chair, the chair shall also be tested according to 12.3.1 with the chair in the unlocked position. The chair shall not tip over.	Pass
Front Stability	ANSI/BIFMA X5.1 -2011 Clause 12.4	-Test Procedure - Alternative A (This alternative may only be used on chairs that do not have a seat surface that will support the stability loading fixture (i.e., mesh, web or strap seat support surfaces)) Apply a vertical load of 600 N (135 lbf.), through a 200 mm (7.87 in.) diameter disk, the center of which is 60 mm (2.4 in.) from the front center edge of the load-bearing surface of the seat. Apply a horizontal force of 20 N (4.5 lbf.) at the same level of the plane of the top of the seat. The force shall be coincident with the side-to-side centerline of the seat. -Test Procedure - Alternative B Apply a vertical load of 600 N (135 lbf.), by means of the front stability loading fixture at a point 60 mm (2.4 in.) from the front center edge of the load-bearing surface of the chair. Apply a horizontal force of 20 N (4.5 lbf.) at the same level of the plane of the top of the seat. The force shall be coincident with the side-to-side centerline of the seat. The chair shall not tip over as the result of the force application.	Pass



SGS-CTI Standards Technical Services Co., Ltd.
Shunde Branch

This document is issued by the Company subject to its General Conditions of Service printed overleaf, available on request or accessible at <http://www.sgs.com/en/Terms-and-Conditions.aspx> and, for electronic format documents, subject to Terms and Conditions for Electronic Documents at <http://www.sgs.com/en/Terms-and-Conditions/Terms-e-Documents.aspx>. Attention is drawn to the limitation of liability, indemnification and jurisdiction issues defined therein. Any holder of this document is advised that information contained hereon reflects the Company's findings at the time of its intervention only and within the limits of Client's instructions, if any. The Company's sole responsibility is to its Client and this document does not exonerate parties to a transaction from exercising all their rights and obligations under the transaction documents. This document cannot be reproduced except in full, without prior written approval of the Company. Any unauthorized alteration, forgery or falsification of the content or appearance of this document is unlawful and offenders may be prosecuted to the fullest extent of the law. Unless otherwise stated the results shown in this test report refer only to the sample(s) tested and such sample(s) are retained for 30 days only.

Attention: To check the authenticity of testing /inspection report & certificate, please contact us at telephone: (86-755) 8307 1443, or email: CN.Doccheck@sgs.com

1/F, 1st Building European Industrial Park, No.1 Shunhuan Road, Wusha Section, Daliang Town, Shunde, Foshan, Guangdong, China 528333 t (86-757)22805888 f (86-757)22805858 www.sgsgroup.com.cn
中国·广东·佛山市顺德区大良街道办事处五沙顺和南路1号欧洲工业园一号楼首层 邮编: 528333 t (86-757)22805888 f (86-757)22805858 e sgs.china@sgs.com

Test Property	Test Method	Test Principle / Requirements	Results
Arm Strength Test Vertical – Static (Functional Load)	BIFMA X5.1-2011 Clause 13 (modified)	No structural breakage or loss of serviceability when 890 N (200 lb) for 1 min. Is applied. The vertical load is uniformly applied through a 5 In. area at the apparent weakest point.	Pass
(Arm Strength Test Vertical –Static (Proof Load)	BIFMA X5.1-2011 Clause 13 (modified)	No sudden and major change in the structural integrity (loss of serviceability is acceptable) when 1334 N (300 lb) for 1 min. is applied. The vertical load is uniformly applied through a 5 In. area at the apparent weakest point.	Pass
Arm Strength Test Horizontal – Static (Functional Load)	ANSI/BIFMA X5.1 -2011 Clause 14	No loss of serviceability when 445N (100 lbs.) for 1 min. is applied horizontally outward to the armrest at the most forward point of the armrest.	Pass
Arm Strength Test Horizontal – Static (Proof Load)	ANSI/BIFMA X5.1 -2011 Clause 14	No sudden and major change in the structural integrity (loss of serviceability is acceptable) when 667N (150 lbs.) for 1 min. is applied horizontally outward to the armrest at the most forward point of the armrest.	Pass
Back Durability Test – Cyclic – Type I	ANSI/BIFMA X5.1 - 2011 Clause 15	No loss of serviceability in 120,000 cycles with a 102kg (225 lbs.) in the center of the seat and a 445N (100 lbf.) 90° to the center of the chair back. For chairs with a back width greater than 406mm (16 in.), test at the center of chair back for 80,000 cycles and then 102mm (4 in.) off-center 40,000 cycles, half to each side.	Pass
Back Durability Test – Cyclic – Type II & III	ANSI/BIFMA X5.1 – 2011 Clause 16	No loss of serviceability in 120,000 cycles with a 102kg (225 lbs.) in the center of the seat and a 334N (75 lbf.) 90° to the center of the chair back. For chairs with a back width greater than 406mm (16 in.), test at the center of chair back for 80,000 cycles and then 102mm (4 in.) off-center 40,000 cycles, half to each side.	Pass
Caster / Chair Base Durability Test For Pedestal Base Chair	ANSI/BIFMA X5.1 - 2011 Clause 17.1	No loss of service after 2,000 cycles over a hard surface with 3 obstacles and 98, 000 cycles over a smooth hard surface without obstacles under a 113kg (250 lbs.) load on the seat. Test stoke is 762mm (30 in.) minimum. The caster should not separate under 22N (5 lbs.) pulling force in line with the caster stem after the cycling test.	Pass



This document is issued by the Company subject to its General Conditions of Service printed overleaf, available on request or accessible at <http://www.sgs.com/en/Terms-and-Conditions.aspx> and, for electronic format documents, subject to Terms and Conditions for Electronic Documents at <http://www.sgs.com/en/Terms-and-Conditions/Terms-e-Documents.aspx>. Attention is drawn to the limitation of liability, indemnification and jurisdiction issues defined therein. Any holder of this document is advised that information contained hereon reflects the Company's findings at the time of its intervention only and within the limits of Client's instructions, if any. The Company's sole responsibility is to its Client and this document does not exonerate parties to a transaction from exercising all their rights and obligations under the transaction documents. This document cannot be reproduced except in full, without prior written approval of the Company. Any unauthorized alteration, forgery or falsification of the content or appearance of this document is unlawful and offenders may be prosecuted to the fullest extent of the law. Unless otherwise stated the results shown in this test report refer only to the sample(s) tested and such sample(s) are retained for 30 days only.

Attention: To check the authenticity of testing /inspection report & certificate, please contact us at telephone: (86-755) 8307 1443, or email: CN.Doccheck@sgs.com

1/F, 1st Building European Industrial Park, No.1 Shunhuan Road, Wusha Section, Daliang Town, Shunde, Foshan, Guangdong, China 528333 t (86-757)22805888 f (86-757)22805858 www.sgschina.com.cn
中国·广东·佛山市顺德区大良街道办事处五沙顺和南路1号欧洲工业园一号楼首层 邮编: 528333 t (86-757)22805888 f (86-757)22805858 e sgs.china@sgs.com

Test Property	Test Method	Test Principle / Requirements	Results
Caster / Chair Base Durability Test For Chairs with Legs	ANSI/BIFMA X5.1 - 2011 Clause 17.2	No loss of service after 2,000 cycles over a hard surface with 2 obstacles and 98, 000 cycles over a smooth hard surface without obstacles under a 113kg (250 lbs.) load on the seat. Test stoke is 762mm (30 in.) minimum. The caster should not separate under 22N (5 lbs.) pulling force in line with the caster stem after the cycling test.	Not applicable
Leg Strength Test – Front Load (Functional Load)	ANSI/BIFMA X5.1 - 2011 Clause 18.3	No loss of serviceability when a force of 334N (75 lbf.) is applied to each front leg individually for 1 minute.	Not applicable
Leg Strength Test – Front Load (Proof Load)	ANSI/BIFMA X5.1 - 2011 Clause 18.3	No sudden and major change in the structural integrity (loss of serviceability is acceptable) when a force of 503N (113 lbf.) is applied to each front leg individually for 1 minute.	Not applicable
Leg Strength Test – Side Load (Functional Load)	ANSI/BIFMA X5.1 - 2011 Clause 18.4	No loss of serviceability when a force of 334N (75 lbf.) is applied once to each front and rear leg individually for 1 minute.	Not applicable
Leg Strength Test – Side Load (Proof Load)	ANSI/BIFMA X5.1 - 2011 Clause 18.4	No sudden and major change in the structural integrity (loss of serviceability is acceptable) when a force of 503N (113 lbf.) is applied once to the front and rear leg individually for 1 minute.	Not applicable
Footrest Static Load Test – Vertical- Functional load (If applicable)	ANSI/BIFMA X5.1 - 2011 Clause 19.4.1	Apply a force F1 of 445 N (100 lbf.) uniformly along a 102 mm (4 in.) distance along the footrest but not greater than 51 mm (2 in.) from the outside edge at the apparent weakest point of the structure for one (1) minute in the vertical downward direction, maintain force F1 and apply an additional force F2 of 445 N (100 lbf.) to the footrest at the opposing position for an additional one (1) minute. There shall be no loss of serviceability or sudden loss of footrest height.	Not applicable

Test Property	Test Method	Test Principle / Requirements	Results
Footrest Static Load Test – Vertical-Proof load (If applicable)	ANSI/BIFMA X5.1 - 2011 Clause 19.4.3	Apply a force of 1334 N (300 lbf.) uniformly along a 102 mm (4 in.) distance along the footrest but not greater than 51 mm (2 in.) from the outside edge at the apparent weakest point of the structure for one (1) minute in the vertical downward direction. The load applied once shall cause no sudden and major change in the structural integrity of the unit. Loss of serviceability is acceptable.	Not applicable
Footrest Durability Test – Vertical – Cyclic (If applicable)	ANSI/BIFMA X5.1 - 2011 Clause 20	No loss of serviceability after 50,000 cycles of a 890N (200 lbf) load vertical along 102mm (4 in.) length of the footrest at the apparent weakest point of the structure.	Not applicable
Arm Durability Test – Cyclic	ANSI/BIFMA X5.1 - 2011 Clause 21	No structural breakage or loss of serviceability when a force of 400N (90 lbf.) is applied to each arm at a 10° angle $\pm 1^\circ$ for 60,000 cycles	Pass
Out Stop Tests For Chairs With Manually Adjustable Seat Depth (If applicable)	ANSI/BIFMA X5.1 - 2011 Clause 22	Place 70 kg (154 lb.) rigid mass in the center of the seat, 25 kg (55lbf.) hanging weight shall be held at its most rearward position, then released, permitting it to move forward rapidly and impact the out stops. Repeat for a total of 25 cycles. There shall be no loss of serviceability to the unit.	Pass
Tablet Arm Static Load Test (If applicable)	ANSI/BIFMA X5.1 - 2011 Clause 23	Apply a load of 68 kg (150 lb.) through a 203 mm diameter area 25 mm from the edge of the surface at its apparent weakest point, for five (5) minutes. Shall cause no sudden and major change in the structural integrity of the chair at the first load, and after performing the test, the tablet arm must allow egress form the unit; other losses of serviceability are acceptable.	Not applicable
Tablet Arm Load Ease Test – Cyclic (If applicable)	ANSI/BIFMA X5.1 - 2011 Clause 24	A 343 N (77 lb.) bag shall be raised until the entire weight is off the tablet surface and then eased (without impact) onto the surface, repeat for a total of 100,000 cycles without loss of serviceability to the unit.	Not applicable
Upholstery Performance			
Cover material			

Test Property	Test Method	Test Principle / Requirements	Results
Fabric weight	ASTM D3776-09	[oz. / sq. yd.] Per product specification	See Result #3
Fabric strength - Warp	ASTM D5034-09	Min. 50 lb	Pass See Result #3
Fabric strength - Weft	ASTM D5034-09	Min. 50 lb	Pass See Result #3
Abrasion resistance	ASTM D3884-09	Abradant: H18, head wt: 500g 200 cycles for leather, corduroy and vinyl only 300 cycles for other fabrics Less than 10% weight loss	FAIL See Result #3
Tear strength - for leather	ASTM D4704-00 R05	Weft/length direction: including bonded leather 1.5 Lbs. (Min.)	Not applicable
Tear strength - for leather	ASTM D4704-00 R05	Warp/width direction: including bonded leather 1.5 Lbs. (Min.)	Not applicable
Tear strength - for most fabrics except leather	ASTM D1424-09	Weft/length direction: 4.0 Lbs. (Min.)	Pass See Result #3
Tear strength - for most fabrics except leather	ASTM D1424-09	Warp/width direction: 4.5 Lbs. (Min.)	Pass See Result #3
Colorfastness to light	AATCC 16	Grade 4.0 @ 10 hr	Pass See Result #3
Colorfastness to crocking	AATCC 8	Dry: Grade 4.0 (min.)	Pass See Result #3
Colorfastness to crocking	AATCC 8	Wet: Grade 3.0 (min.)	Pass See Result #3
Colorfastness to Water Spotting	AATCC 104-04	Class 3.5 (min.)	FAIL See Result #3
Soil Release (For fabric only)	AATCC 130	Class 4 (min.)	Not applicable
*Leather Identification	Microscopic	[Leather content analysis] Verify that leather present is the actual grade of leather per label claim (Genuine, Top Grain Cowhide, etc.).	Not applicable
Filling material (Foam)			
Environment test	OD Requirement	Place the PU foam material under 700oC for 4 hours, maximum 3% of the residues (weight) remain.	Pass See Result #4

Test Report

No.: SDHL1603002546FT

Date: Aug.17, 2016

Page 15 of 47

Test Property	Test Method	Test Principle / Requirements	Results
Foam resilience - Test B1 (only applicable if actual foam used in the sample have min.50mm thickness)	ASTM D3574	Sample 1: Original Foam: Apply the test according to "test B1" table below on the original foam sample. Foam size: 380mm X 380mm X 50mm Loading pad: 250mmDIA	See below test results & Result #4
		25 % compression:	143N/123N
		65 % compression:	366N/350N
Foam resilience - Test B2 (only applicable if actual foam used in the sample have min.50mm thickness)	ASTM D3574	Sample 1: Original Foam: Apply the test according to "test B2" table below on the original foam sample. Foam size: 380mm X 380mm X 50mm Loading pad: 250mmDIA	See below test results & Result #4
		4.5N:	50.1mm/49.2mm
		110N:	44.6mm/40.0mm
		220N:	26.5mm/22.9mm
*Dynamic Fatigue - Test I3 (only applicable if actual foam used in the sample have min.50mm thickness)	ASTM D3574 (Mod.)	Sample 2: Foam after mechanical test: The sample shall be conditioned for at least 12 hours under 23+/-2oC, 50+/-5% RH. Apply certain force on the sample to its 20% thickness for 80,000 cycles with 70 cycles/minute: Foam size: 380mm X 380mm X 50mm Loading pad: 250mmDIA Acceptance level: 10 minutes after the 80,000 cycles, the loss of thickness shall not greater than 10%. Use the same foam after cycle test to re-perform the Test B1 & B2, for data record only, no pass/fail required.	Thickness before/after 80,000 cycles test:
			Test B1 (Force)
		25 % compression:	143N
		65 % compression:	366N
			Test B2 (Thickness)
		4.5N:	50.1mm
		110N:	44.6mm
		220N:	26.5mm

Annex 1: Additional notes

Yellow highlighted tests are Canadian mandatory requirements to be conducted when distributing in Canada

Blue highlighted tests are US mandatory requirements to be conducted when distributing in the US



This document is issued by the Company subject to its General Conditions of Service printed overleaf, available on request or accessible at <http://www.sgs.com/en/Terms-and-Conditions.aspx> and, for electronic format documents, subject to Terms and Conditions for Electronic Documents at <http://www.sgs.com/en/Terms-and-Conditions/Terms-e-Documents.aspx>. Attention is drawn to the limitation of liability, indemnification and jurisdiction issues defined therein. Any holder of this document is advised that information contained hereon reflects the Company's findings at the time of its intervention only and within the limits of Client's instructions, if any. The Company's sole responsibility is to its Client and this document does not exonerate parties to a transaction from exercising all their rights and obligations under the transaction documents. This document cannot be reproduced except in full, without prior written approval of the Company. Any unauthorized alteration, forgery or falsification of the content or appearance of this document is unlawful and offenders may be prosecuted to the fullest extent of the law. Unless otherwise stated the results shown in this test report refer only to the sample(s) tested and such sample(s) are retained for 30 days only.

Attention: To check the authenticity of testing /inspection report & certificate, please contact us at telephone: (86-755) 8307 1443, or email: CN.Doccheck@sgs.com

SGS-CTI Standards Technical Services Co., Ltd.
Shunde Branch

1/F, 1st Building European Industrial Park, No.1 Shunhuan Road, Wusha Section, Daliang Town, Shunde, Foshan, Guangdong, China 528333 t (86-757)22805888 f (86-757)22805858 www.sgsgroup.com.cn
中国·广东·佛山市顺德区大良街道办事处五沙顺和南路1号欧洲工业园一号楼首层 邮编: 528333 t (86-757)22805888 f (86-757)22805858 e sgs.china@sgs.com

Test Result Details
Protocol No.: OD-SU0002-Bedding Upholstered Furniture Supplemental-US-CAN-V4.0

Test Property	Test Method	Test Principle / Requirements	Results
SCOPE: Supplemental requirements for bedding or upholstered furniture. See covered product list in APPENDIX 1 and exempted product list in APPENDIX 2. This protocol does not cover 16 CFR 1632 and 16 CFR 1633 requirements that are required for mattress / mattress pad. Do not use this protocol for mattress / mattress pad. REFERENCE: Where there are no applicable US standards, SGS has chosen the most relevant International, National standards to assess the product safety and performance. For undated references, the latest edition of the referenced document (including any amendments) applies.			
LABELING			
* Bedding or upholstered furniture	SU0003-US-CAN	Bedding or upholstered furniture shall comply with the labelling, flammability and chemical requirement in accordance with the regulations.	PASS See SU0003-US-CAN
Flammability (Domestic use) -US			
* Flame retardance of upholstered furniture (By request or if claimed) (California market only)	California Technical Bulletin 116-1980	See attached test results / requirements.	Not requested
* Smoldering resistance of materials used in upholstered furniture (California market only)	California Technical Bulletin 117-2013	Each upholstered furniture components shall comply with the requirements of the regulation.	PASS See Result #2
Flammability (public use) -US			
* Flame retardance of upholstered furniture (California market only)	California Technical Bulletin 133-1991	See attached test results / requirements.	Not requested
Flammability -CAN			
*Flammability for Cover fabric only	SOR/2011-22	Must comply with regulations.	PASS See Result #2
Analytical-US			

Test Property	Test Method	Test Principle / Requirements	Results
* Flame retardant chemical content (California market only)	California Business and Professional Code section 19094	<p>If "Added flame retardant chemicals" is declared on label, no declaration letter or test is required.</p> <p>If "NO added flame retardant chemicals" is declared on label, a declaration letter or test report substantiating the claim shall be supplied for the file.</p> <p>In no declaration letter is obtain to substantiate the claim, then testing for flame retardants will be conducted.</p> <p>The flame retardant content of the upholstered furniture or components shall not exceed 1000 ppm. Antimony trioxide (as Antimony, Sb) will be tested directly using acid digestion method. A screening test of Cl, Br, P content in the upholstered furniture or components will be conducted using XRF or acid digestion method. If the result of screening test exceeds the limit of 1000ppm, 25 selected flame retardants will be tested using GC/MS & GC/ECD method. If the Sb content test and Cl, Br, P screening test results does not exceed the limit of 1000ppm, the test will be PASS.</p> <p>25 selected flame retardants are listed as below: Tris-(2,3-dibromopropyl) Phosphate (TDBPP/Tris) Tris(1,3-dichloro-2-propyl) Phosphate(TDCPP) Tris(2-chloroethyl) Phosphate(TCEP) Tris(1-chloro-2-propyl) Phosphate (TCPP) 2-Ethylhexyl tetrabromobenzoate (TBB) Bis(2-ethylhexyl)-2,3,4,5-tetrabromophthalate(TBPH) Triphenyl Phosphate(TPP) 2,2-bis(chloromethyl)trimethylene bis(bis(2-chloroethyl)phosphate) (V6) 4-(tert-Butyl)phenyl diphenyl phosphate (MDPP) Bis(tert-Butylphenyl) phenyl phosphate (DBPP) tris-(4-tert-Butylphenyl) phosphate (TBPP) Trimethyl Phosphate (TMP) Pentabromodiphenyl ethers (Penta-BDEs) Octabromodiphenyl ethers (Octa-BDEs) Decabromodiphenyl ether (Deca-BDE) Hexabromocyclododecane (HBCDD) Tetrabromobisphenol A (TBBPA) Dechlorane Plus (DP) 1,2-Bis(2,4,6-tribromophenoxy)ethane(BTBPE) Decabromodiphenyl Ethane (DBDPE) 1,2-Dibromo-4-(1,2-dibromoethyl)cyclohexane (TBECH) Hexachlorocyclopentadienyl-dibromocyclooctane (DBHC-TCTD) Pentabromoethylbenzene (PBEB) Alkanes C10-C13, chloro (short-chain chlorinated paraffins) (SCCPs) .</p>	<p>PASS</p> <p>See result #1</p>



This document is issued by the Company subject to its General Conditions of Service printed overleaf, available on request or accessible at <http://www.sgs.com/en/Terms-and-Conditions.aspx> and, for electronic format documents, subject to Terms and Conditions for Electronic Documents at <http://www.sgs.com/en/Terms-and-Conditions/Terms-e-Documents.aspx>. Attention is drawn to the limitation of liability, indemnification and jurisdiction issues defined therein. Any holder of this document is advised that information contained hereon reflects the Company's findings at the time of its intervention only and within the limits of Client's instructions, if any. The Company's sole responsibility to its Client and this document does not exonerate parties to a transaction from exercising all their rights and obligations under the transaction documents. This document cannot be reproduced except in full, without prior written approval of the Company. Any unauthorized alteration, forgery or falsification of the content or appearance of this document is unlawful and offenders may be prosecuted to the fullest extent of the law. Unless otherwise stated the results shown in this test report refer only to the sample(s) tested and such sample(s) are retained for 30 days only.

Attention: To check the authenticity of testing /inspection report & certificate, please contact us at telephone: (86-755) 8307 1443, or email: CN.Doccheck@sqs.com

SGS-SONO Standards Technical Services Co., Ltd.
Shunde Branch Testing Center: Guangdong Laboratory.

1/F, Building European Industrial Park, No.1 Shunshun Road, Wusha Section, Dailing Town, Shunde, Foshan, Guangdong, China 528393 t (86-757)22805888 f (86-757)22805858 www.sgsgroup.com.cn
中国·广东·佛山市顺德区大良街道办外五沙顺和南路1号欧洲工业园一号厂房首层 邮编: 528393 t (86-757)22805888 f (86-757)22805858 e sg.china@sgs.com

Test Result Details
Protocol No.: OD-SU0003-Law Label Flammability Label-US-CAN-V3.0

Test Property	Test Method	Test Principle / Requirements	Results
SCOPE: Labelling requirement for Law Label (Bedding Tag) and California Flammability Label			
REFERENCE: Where there are no applicable US standards, SGS has chosen the most relevant International, National standards to assess the product safety and performance. For undated references, the latest edition of the referenced document (including any amendments) applies.			
LAW Label (US)			
LAW Label (Bedding Tag) State Bedding Laws			
Label Material Composition	Visual check	IABFLO required label must be Tyvek, Valeron Vellum cloth, or a material of comparable quality that will not flake when abraded. Only fail the law label when it is made of paper and/or poor label quality that can tear easily by hand.	PASS
Uniform Law Label Size	Standard measurement	Minimum size 2 x 3 inches as required by law Measure from label outside edge to edge	PASS
Printing	Visual check	English language, black font on white background, no printing on back	PASS
New Format Law Label	Visual check	Should not contain any blank stamp block on law label (see attached Appendix 1 for new law label format)	PASS
New Format Law Label	Visual check	1. No advertising or company logo is permitted on the law label. 2. The label shall be securely fastened or sewn into one of the outside seams and be clearly visible to the consumer. 3. There will be no printing on the back of the law label. 4. No dual language law labels are allowed. 5. No washing instructions are allowed on label. 6. A Thick Bold line is required to separate the Law label & Flam. label	PASS
LAW LABEL CONTENTS:			
Law Statement (Shall Appear at the Top of Label)	Verify Presence	UNDER PENALTY OF LAW THIS TAG NOT TO BE REMOVED EXCEPT BY THE CONSUMER	PASS
Font size		The minimum font size in this section is: — 1/8" in height and — Must be bold and in capital letters — With separate line for sectional disclosure of information	PASS



This document is issued by the Company subject to its General Conditions of Service printed overleaf, available on request or accessible at <http://www.sgs.com/en/Terms-and-Conditions.aspx> and, for electronic format documents, subject to Terms and Conditions for Electronic Documents at <http://www.sgs.com/en/Terms-and-Conditions/Terms-e-Documents.aspx>. Attention is drawn to the limitation of liability, indemnification and jurisdiction issues defined therein. Any holder of this document is advised that information contained hereon reflects the Company's findings at the time of its intervention only and within the limits of Client's instructions, if any. The Company's sole responsibility is to its Client and this document does not exonerate parties to a transaction from exercising all their rights and obligations under the transaction documents. This document cannot be reproduced except in full, without prior written approval of the Company. Any unauthorized alteration, forgery or falsification of the content or appearance of this document is unlawful and offenders may be prosecuted to the fullest extent of the law. Unless otherwise stated the results shown in this test report refer only to the sample(s) tested and such sample(s) are retained for 30 days only.

Attention: To check the authenticity of testing /inspection report & certificate, please contact us at telephone: (86-755) 8307 1443, or email: CN.Doccheck@sgs.com

SGS-CTI Standards Technical Services Co., Ltd.
Shunde Branch, Standards Technical Services Laboratory.

1/F, 1st Building European Industrial Park, No.1 Shunshen Road, Wusha Section, Daliang Town, Shunde, Foshan, Guangdong, China 528333 t (86-757)22805888 f (86-757)22805858 www.sgsgroup.com.cn
中国·广东·佛山市顺德区大良街道办事处五沙顺和南路1号欧洲工业园一号楼首层 邮编: 528333 t (86-757)22805888 f (86-757)22805858 e sgs.china@sgs.com

Test Property	Test Method	Test Principle / Requirements	Results
Material Statement (Label Review Only)	Verify Presence	ALL NEW MATERIAL consisting of (Description of filling material by its true generic name. If more than one filling material is used, the percentage by weight in order of predominance, the largest component first.) If filling material is in the form of a pad, the term pad is required as disclosure of the content (as applicable). In the case of non-down filled articles, any fiber or groups of fibers in an amount less than 5% by weight, of the total fiber content may be designated only as "other Fibers". Must have separate descriptions when cushions are loose.	PASS
Font Size & Font Type		The word "ALL NEW MATERIAL" and the description of the filling materials in this section. The minimum font size is: — 1/8" in height and — Must be in bold and in capital letters.	PASS
Contents Sterilized Applicable to Down and Feather Only		For Feather & Down filling material. The statement "CONTENTS STERILIZED" must be added to the label in this section, followed by filling material(s) name. This section of label is to be followed with a solid line to separate the disclose of information presented on the label	Not applicable
Registration and Permit Number With Documentation	Verify Presence	REG. NO. Vendor must include copy of registration notice from the originating state (per client protocol). Anything official with state letterhead and accurate product description is acceptable. — With separate line for sectional disclosure of information	PASS
(Permit Number Applicable to Down and Feather Only)		REG. No..... Permit Number..... (Capital letters is suggested but do not fail for this if case lettering is not written as listed above)	PASS

Test Property	Test Method	Test Principle / Requirements	Results
Registration documentation review	OD Requirement / Visual check	Vendor must submit the documentation. Verify whether the product has been registered in the following states and the date of the documentation should not be expired. Connecticut, Massachusetts, Detroit (Michigan), Rhode Island, West Virginia, California, Pennsylvania, Utah, Virginia, Ohio	PASS
Certification Statement	Verify Presence	Certification is made by the manufacturer that the materials in this article are described in accordance with law. — With separate line for sectional disclosure of information	PASS
Name and Address of Manufacturer, Importer or Distributor (Required)	Verify Presence	Use the following option as appropriate, depending if you are the manufacturer (MADE BY), importer or distributor (MADE FOR). Please note: "MADE BY" and "MADE FOR" are the preferred terms accepted by all states. Other terms should be approved before used. The phrases "MADE BY" or "MADE FOR" must be in capital letters and in bold print. The full street address is required to be on the label. This section of label is to be followed with a solid line to separate the disclose of information presented on the label	PASS
Date of Delivery	Verify Presence	Report actual Do not Pass or Fail The words "Date of Delivery" are required In the other information section of the law label.	Actual: February 2016
Finished size (Sleeping bags, mattresses, comforters, mattress pads, pads, (box springs, pillows and similar articles) (Not For Decorative Pillows)	Verify if Present	Report actual Pass or fail is required Length expressed in inches Width expressed in inches Metric alone is not allowed The terms (") or (in.) is acceptable	Actual: Not filled
Net Weight of Filling Material (Sleeping Bags, mattresses, box springs, pads (sewn in pads for mattresses) and similar items) (Not for Bed or Decorative Pillows)	Verify if Present	Report actual Pass or fail is required Weight in pounds and ounces. e.g. Acceptable: 4lbs; or 4lbs 8 oz; or 10oz; Not acceptable: 4.12 lbs	Actual: Not present



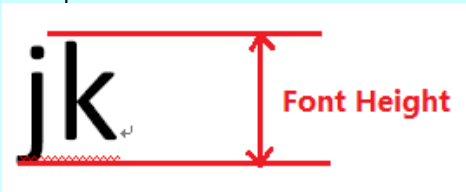
This document is issued by the Company subject to its General Conditions of Service printed overleaf, available on request or accessible at <http://www.sgs.com/en/Terms-and-Conditions.aspx> and, for electronic format documents, subject to Terms and Conditions for Electronic Documents at <http://www.sgs.com/en/Terms-and-Conditions/Terms-e-Documents.aspx>. Attention is drawn to the limitation of liability, indemnification and jurisdiction issues defined therein. Any holder of this document is advised that information contained hereon reflects the Company's findings at the time of its intervention only and within the limits of Client's instructions, if any. The Company's sole responsibility is to its Client and this document does not exonerate parties to a transaction from exercising all their rights and obligations under the transaction documents. This document cannot be reproduced except in full, without prior written approval of the Company. Any unauthorized alteration, forgery or falsification of the content or appearance of this document is unlawful and offenders may be prosecuted to the fullest extent of the law. Unless otherwise stated the results shown in this test report refer only to the sample(s) tested and such sample(s) are retained for 30 days only.

Attention: To check the authenticity of testing /inspection report & certificate, please contact us at telephone: (86-755) 8307 1443, or email: CN.Doccheck@sgs.com

1/F, 1st Building European Industrial Park, No.1 Shunhuan Road, Wusha Section, Daliang Town, Shunde, Foshan, Guangdong, China 528333 t (86-757)22805888 f (86-757)22805858 www.sgsgroup.com.cn
中国·广东·佛山市顺德区大良街道办事处五沙顺和南路1号欧洲工业园一号楼首层 邮编: 528333 t (86-757)22805888 f (86-757)22805858 e sgs.china@sgs.com

Test Property	Test Method	Test Principle / Requirements	Results
Federal RN# (Optional)	FTC	Report actual Do not Pass or Fail If required for product type	Actual:No Federal RN#
Country of Origin	U.S. Customs	"MADE IN" (if imported must be present) Report actual. Fail If Imported and information is not present Fonts need to be in bold print and caps.	Actual: MADE IN CHINA
Others (Shell / Lining / Filling)	Verify if Present	Report actual Do not Pass or Fail	Actual:No present
Others (e.g. Care Instruction)	Verify if Present	Report actual Do not Pass or Fail	Actual:No present
Others	Verify if Present	Report actual Do not Pass or Fail No advertising or company logo is permitted on the law label.	Actual:No present
Bar Code (Optional)	Verify if Present	Report actual Do not Pass or Fail Verify Presence Some states allow placement of a bar code at the bottom of the label separated by a bold black line from the rest of the label information	Actual:No present
FLAMMABILITY FOR CALIFORNIA BUREAU HOME FURNISHINGS:			
LABEL LOCATION: (DATA ONLY)(As required by Client)			
PRODUCT LABEL ATTACHED METHOD			
Upholstered Furniture:	visual	Attached by adhesive or the staple	Not applicable
Upholstered Furniture:	visual	Attached by stitching	PASS
Pillow, Cushion:	visual	Attached by stitching	Not applicable
Others:	visual	Attached by stitching	Not applicable
Flammability label			
CALIFORNIA FLAMMABILITY LABELING (One of the three statements is required for upholstered furniture falling under the scope including seat cushions and chair pads) Applicability: FOR INDOOR UPHOLSTERED PRODUCTS Note: All children furniture items must comply with TB 117 requirements	CA Bureau Of Electronic And Appliance Repair, Home Furnishings And Thermal Insulation Act	Label 1 : For all bulk filling materials which meet the requirements of the Bureau of Home Furnishings TB 117-2013: NOTICE THIS ARTICLE MEETS THE FLAMMABILITY REQUIREMENTS OF CALIFORNIA BUREAU OF ELECTRONIC AND APPLIANCE REPAIR, HOME FURNISHINGS AND THERMAL INSULATION TECHNICAL BULLETINS 117-2013. CARE SHOULD BE EXERCISED NEAR OPEN FLAME OR WITH BURNING CIGARETTES.	PASS

Test Property	Test Method	Test Principle / Requirements	Results
Note: If upholstered furniture meets both TB 116 & 117 flammability requirements, then it shall use the following statement:	CA Bureau Of Electronic And Appliance Repair, Home Furnishings And Thermal Insulation Act	LABEL 2: NOTICE THIS ARTICLE MEETS ALL FLAMMABILITY REQUIREMENTS OF CALIFORNIA BUREAU OF ELECTRONIC AND APPLIANCE REPAIR, HOME FURNISHINGS AND THERMAL INSULATION TECHNICAL BULLETINS 116 AND 117-2013. CARE SHOULD BE EXERCISED NEAR OPEN FLAME OR WITH BURNING CIGARETTES.	Not applicable
Location	CA Bureau Of Electronic And Appliance Repair, Home Furnishings And Thermal Insulation Act	It should be a separate section and/or individual label attached on product by ether 1 of 3 methods: * Side by Side (flammability notice on the right & separated the law label by a thick black line. * Top & Bottom (flammability notice on the bottom & separated the law label by a thick black line. * An individual label attached on product (min size 2" x 3" for individual label only)	PASS
Font Size & Font Type	CA Bureau Of Electronic And Appliance Repair, Home Furnishings And Thermal Insulation Act	All words in Flammability Notice section must be: - 1/8" in height and - Must be in bold and in capital letters	PASS
Flame Retardants Label			

Test Property	Test Method	Test Principle / Requirements	Results
Flame retardants chemical statement	SB 1019	<p>The font size must be a minimum height of 1/8 inch; however, the statement need not be in all capital letters. The 1/8 inch height will be measured from the lowest measuring lower case letter. Example as below:</p>  <p>“The upholstery materials in this product: _____contain added flame retardant chemicals _____contain NO added flame retardant chemicals The State of California has updated the flammability standard and determined that the fire safety requirements for this product can be met without adding flame retardant chemicals. The state has identified many flame retardant chemicals as being known to, or strongly suspected of, adversely impacting human health or development.”</p> <p>A manufacturer of covered products shall indicate the absence or presence of added flame retardant chemicals by placing an “X” in one of the appropriate blanks.”</p>	PASS
LAW Label (CAN)			

Test Property	Test Method	Test Principle / Requirements	Results
Upholstered and Stuffed Articles Label	Ontario Regulation Technical Standards and Safety Act, 2000/ Quebec Regulation/ The Public Health Act of Manitoba, C.C.S.M. c. P210 Bedding, Upholstered and Stuffed Articles Regulation	<p>[CANADA]</p> <p>Report label placement and verify label format and required wording is present per the Regulation in the province where the product is manufactured (Ontario, Manitoba or Quebec).</p> <p>a) Must specify the fiber content of the filling or stuffing using the generic names of all stuffing materials, listed in order of predominance, by volume not by percentage, used in the article.</p> <p>b) Shall be made of Tyvek®, mylar, linen or a material equivalent in strength to those materials.</p> <p>c) Must be securely affixed to the article to a conspicuous part of the main body of the article (Ontario).</p> <p>d) Must be printed in black ink (Ontario & Quebec) on white label and must be sized a minimum 6.4 cm wide x 9 cm long (Ontario & Manitoba).</p> <p>e) Article must have been manufactured by a registered manufacturer (Ontario & Manitoba).</p> <p>f) Must include a registration number and the business name and address of the manufacturer.</p> <p>Label must state NEW MATERIAL ONLY Ontario, Manitoba, and Quebec have similar legislation to each other.</p> <p>If the factory is located in one of these three provinces, registration can be done directly with the respective provinces and automatically accepted in the other two provinces. If the factory is outside of these three provinces, registration must be done directly with each of the provinces where the articles would be sold.</p> <p>Federal laws require a fibre content statement for all textile components in bed pillows, comforters, sleeping bags and apparel. These statements may be printed on the bottom of provincial labels, separated by a bold line under the heading "Federal Requirement", or on a separate label. When filling content statements are printed on a separate federal label, it is not necessary to print the same information a second time on the provincial label. Form 1 is for furniture and bedding, Form 2 is for clothing and miscellaneous, and Form 3 is for toys and smaller items.</p>	PASS



This document is issued by the Company subject to its General Conditions of Service printed overleaf, available on request or accessible at <http://www.sgs.com/en/Terms-and-Conditions.aspx> and, for electronic format documents, subject to Terms and Conditions for Electronic Documents at <http://www.sgs.com/en/Terms-and-Conditions/Terms-e-Documents.aspx>. Attention is drawn to the limitation of liability, indemnification and jurisdiction issues defined therein. Any holder of this document is advised that information contained hereon reflects the Company's findings at the time of its intervention only and within the limits of Client's instructions, if any. The Company's sole responsibility is to its Client and this document does not exonerate parties to a transaction from exercising all their rights and obligations under the transaction documents. This document cannot be reproduced except in full, without prior written approval of the Company. Any unauthorized alteration, forgery or falsification of the content or appearance of this document is unlawful and offenders may be prosecuted to the fullest extent of the law. Unless otherwise stated the results shown in this test report refer only to the sample(s) tested and such sample(s) are retained for 30 days only.

Attention: To check the authenticity of testing /inspection report & certificate, please contact us at telephone: (86-755) 8307 1443, or email: CN.Doccheck@sgs.com

1/F, 1st Building European Industrial Park, No.1 Shunshen Road, Wusha Section, Dailing Town, Shunde, Foshan, Guangdong, China 528333 t (86-757)22805888 f (86-757)22805858 www.sgsgroup.com.cn
中国·广东·佛山市顺德区大良街道办事处五沙顺和南路1号欧洲工业园一号楼首层 邮编: 528333 t (86-757)22805888 f (86-757)22805858 e sgs.china@sgs.com

Test Property	Test Method	Test Principle / Requirements	Results
Registration documentation review	OD Requirement / Visual check	<p>Vendor must submit the documentation. Verify whether the product has been registered in the following province: Ontario, Manitoba, Quebec</p> <p>The date of the documentation should not be expired.</p> <p>Note: State the register number of Quebec in law label if there are not the same.</p>	PASS



This document is issued by the Company subject to its General Conditions of Service printed overleaf, available on request or accessible at <http://www.sgs.com/en/Terms-and-Conditions.aspx> and, for electronic format documents, subject to Terms and Conditions for Electronic Documents at <http://www.sgs.com/en/Terms-and-Conditions/Terms-e-Documents.aspx>. Attention is drawn to the limitation of liability, indemnification and jurisdiction issues defined therein. Any holder of this document is advised that information contained hereon reflects the Company's findings at the time of its intervention only and within the limits of Client's instructions, if any. The Company's sole responsibility is to its Client and this document does not exonerate parties to a transaction from exercising all their rights and obligations under the transaction documents. This document cannot be reproduced except in full, without prior written approval of the Company. Any unauthorized alteration, forgery or falsification of the content or appearance of this document is unlawful and offenders may be prosecuted to the fullest extent of the law. Unless otherwise stated the results shown in this test report refer only to the sample(s) tested and such sample(s) are retained for 30 days only.

Attention: To check the authenticity of testing /inspection report & certificate, please contact us at telephone: (86-755) 8307 1443, or email: CN.Doccheck@sgs.com

1/F, 1st Building European Industrial Park, No.1 Shunhemen Road, Wusha Section, Dailang Town, Shunde, Foshan, Guangdong, China 528333 t (86-757)22805888 f (86-757)22805858 www.sgsgroup.com.cn
中国·广东·佛山市顺德区大良街道办事处五沙顺和南路1号欧洲工业园一号楼首层 邮编: 528333 t (86-757)22805888 f (86-757)22805858 e sgs.china@sgs.com

Test Result Details

Protocol No.: Applicable tests from OD-CM0001 General chemical V8.0

Test Property	Test Method	Test Principle / Requirements	Results
ANALYTICAL (US)			
*Total lead content in surface coatings	Consumer Product Safety Improvement Act of 2008 / 16 CFR 1303 / AOAC 974.02 (modified) / CPSC-CH-E1003-09.1	<p>All accessible surface coatings, before and after use and abuse testing, on items shall not contain lead or lead components in which the lead content is in excess of 0.009% (90ppm) of the weight of the total content.</p> <p>In case of insufficient coating for testing found on number of samples specified in the protocol, vendor needs to provide additional samples for testing.</p> <p>Component testing is allowed. Compositing up to 3 like materials is allowed except metal.</p> <p>Component testing is allowed. Based on CPSC SOP, will composite up to 3 colors. If any color in the composite exceeds 80% of the limit (72 ppm), based on the lowest weight component, individual colors will be analyzed.</p>	<p>PASS</p> <p>See Result #1</p>
*Toxics in Packaging Clearing House Legislation (For Packaging Material)	Acid digestion, analyzed by AAS or ICP-AES	<p>The total content of Pb+Hg+Cd+Cr(VI) in packaging and packaging components shall comply with TPCH legislation and not exceed 100mg/kg.</p> <p>Document review.</p> <p>In lieu of testing, test report can be submitted if dated within one year.</p>	<p>PASS</p> <p>Document review</p>

Test Property	Test Method	Test Principle / Requirements	Results
* Flame retardant chemical content (California market only)	California Business and Professional Code section 19094	<p>If "Added flame retardant chemicals" is declared on label, no declaration letter or test is required.</p> <p>If "NO added flame retardant chemicals" is declared on label, a declaration letter or test report substantiating the claim shall be supplied for the file.</p> <p>In no declaration letter is obtain to substantiate the claim, then testing for flame retardants will be conducted.</p> <p>The flame retardant content of the upholstered furniture or components shall not exceed 1000 ppm.</p> <p>Antimony trioxide (as Antimony, Sb) will be tested directly using acid digestion method. A screening test of Cl, Br, P content in the upholstered furniture or components will be conducted using XRF or acid digestion method. If the result of screening test exceeds the limit of 1000ppm, 25 selected flame retardants will be tested using GC/MS & GC/ECD method. If the Sb content test and Cl, Br, P screening test results does not exceed the limit of 1000ppm, the test will be PASS.</p> <p>25 selected flame retardants are listed as below:</p> <p>Tris-(2,3-dibromopropyl) Phosphate (TDBPP/Tris)</p> <p>Tris(1,3-dichloro-2-propyl) Phosphate(TDCPP)</p> <p>Tris(2-chloroethyl) Phosphate(TCEP)</p> <p>Tris(1-chloro-2-propyl) Phosphate (TCPP)</p> <p>2-Ethylhexyl tetrabromobenzoate (TBB)</p> <p>Bis(2-ethylhexyl)-2,3,4,5-tetrabromophthalate(TBPH)</p> <p>Triphenyl Phosphate(TPP)</p> <p>2,2-bis(chloromethyl)trimethylene bis(bis(2-chloroethyl)phosphate) (V6)</p> <p>4-(tert-Butyl)phenyl diphenyl phosphate (MDPP)</p> <p>Bis(tert-Butylphenyl) phenyl phosphate (DBPP)</p> <p>tris-(4-tert-Butylphenyl) phosphate (TBPP)</p> <p>Trimethyl Phosphate (TMP)</p> <p>Pentabromodiphenyl ethers (Penta-BDEs)</p> <p>Octabromodiphenyl ethers (Octa-BDEs)</p> <p>Decabromodiphenyl ether (Deca-BDE)</p> <p>Hexabromocyclododecane (HBCDD)</p> <p>Tetrabromobisphenol A (TBBPA)</p> <p>Dechlorane Plus (DP)</p> <p>1,2-Bis(2,4,6-tribromophenoxy)ethane(BTBPE)</p> <p>Decabromodiphenyl Ethane (DBDPE)</p> <p>1,2-Dibromo-4-(1,2-dibromoethyl)cyclohexane (TBECH)</p> <p>Hexachlorocyclopentadienyl-dibromocyclooctane (DBHC-TCTD)</p> <p>Pentabromoethylbenzene (PBEB)</p> <p>Alkanes C10-C13, chloro (short-chain chlorinated paraffins) (SCCPs) .</p>	<p>PASS</p> <p>See Result #1</p>

ANALYTICAL (CANADA)



SGS-CTI Standards Technical Services Co., Ltd.
Shunde Branch Shunde Technical Goods Laboratory

This document is issued by the Company subject to its General Conditions of Service printed overleaf, available on request or accessible at <http://www.sgs.com/en/Terms-and-Conditions.aspx> and, for electronic format documents, subject to Terms and Conditions for Electronic Documents at <http://www.sgs.com/en/Terms-and-Conditions/Terms-e-Documents.aspx>. Attention is drawn to the limitation of liability, indemnification and jurisdiction issues defined therein. Any holder of this document is advised that information contained hereon reflects the Company's findings at the time of its intervention only and within the limits of Client's instructions, if any. The Company's sole responsibility is to its Client and this document does not exonerate parties to a transaction from exercising all their rights and obligations under the transaction documents. This document cannot be reproduced except in full, without prior written approval of the Company. Any unauthorized alteration, forgery or falsification of the content or appearance of this document is unlawful and offenders may be prosecuted to the fullest extent of the law. Unless otherwise stated the results shown in this test report refer only to the sample(s) tested and such sample(s) are retained for 30 days only.

Attention: To check the authenticity of testing /inspection report & certificate, please contact us at telephone: (86-755) 8307 1443, or email: CN.Doccheck@sgs.com

1/F, 1st Building European Industrial Park, No.1 Shunhuan Road, Wusha Section, Daliang Town, Shunde, Foshan, Guangdong, China 528333 t (86-757)22805888 f (86-757)22805858 www.sgs.com.cn
中国·广东·佛山市顺德区大良街道办事处五沙顺和南路1号欧洲工业园一号楼首层 邮编: 528333 t (86-757)22805888 f (86-757)22805858 e sgs.china@sgs.com

Test Property	Test Method	Test Principle / Requirements	Results
*Total lead content in surface coatings	Canada Surface Coating Materials Regulations (SOR/2005-109)	All accessible surface coatings in the as received state shall not contain lead or lead components in which the lead content is in excess of 0.009% (90ppm) of the weight of the total content. Component testing is allowed. Composite up to 3 colors are allowed. If any color in the composite exceeds 80% of the limit (72 ppm), based on the lowest weight component, individual colors will be analyzed.	PASS See Result #1
* Total mercury content in surface coating materials	Canada Surface Coating Materials Regulations (SOR/2005-109) section 7	Surface coating material shall not contain mercury in excess of 10 mg/kg when a dried sample of it is tested. Composite up to 3 colors is allowed. If any color in the composite exceeds 80% of the limit based on the lowest weight component, individual colors will be analyzed.	PASS See Result #1



This document is issued by the Company subject to its General Conditions of Service printed overleaf, available on request or accessible at <http://www.sgs.com/en/Terms-and-Conditions.aspx> and, for electronic format documents, subject to Terms and Conditions for Electronic Documents at <http://www.sgs.com/en/Terms-and-Conditions/Terms-e-Document.aspx>. Attention is drawn to the limitation of liability, indemnification and jurisdiction issues defined therein. Any holder of this document is advised that information contained hereon reflects the Company's findings at the time of its intervention only and within the limits of Client's instructions, if any. The Company's sole responsibility is to its Client and this document does not exonerate parties to a transaction from exercising all their rights and obligations under the transaction documents. This document cannot be reproduced except in full, without prior written approval of the Company. Any unauthorized alteration, forgery or falsification of the content or appearance of this document is unlawful and offenders may be prosecuted to the fullest extent of the law. Unless otherwise stated the results shown in this test report refer only to the sample(s) tested and such sample(s) are retained for 30 days only.

Attention: To check the authenticity of testing /inspection report & certificate, please contact us at telephone: (86-755) 8307 1443, or email: CN.Doccheck@sgs.com

1/F, 1st Building European Industrial Park, No.1 Shunhuan Road, Wusha Section, Daliang Town, Shunde, Foshan, Guangdong, China 528333 t (86-757)22805888 f (86-757)22805858 www.sgsgroup.com.cn
中国·广东·佛山市顺德区大良街道办事处五沙顺和南路1号欧洲工业园一号楼首层 邮编: 528333 t (86-757)22805888 f (86-757)22805858 e sgs.china@sgs.com

Test Report

No.: SDHL1603002546FT

Date: Aug.17, 2016

Page 29 of 47

Result #1

Test Conducted: (SGS Ref No.: CAN16-0038647)

Test Part Description :

Specimen No.	SGS Sample ID	Description
SN1	CAN16-038647.001	Black coating on metal
SN2	CAN16-038647.002	Gray fabric
SN3	CAN16-038647.003	Black fabric
SN4	CAN16-038647.004	White sponge

Remarks :

- (1) 1 mg/kg = 0.0001%
- (2) MDL = Method Detection Limit
- (3) ND = Not Detected (< MDL)
- (4) "-" = Not Regulated

16 CFR 1303

Test Method : CPSC Test Method: CPSC-CH-E1003-09.1 'Standard Operation Procedure for Determining Lead (Pb) in Paint and Other Similar Surface Coatings'.

Test Item(s)	Limit	Unit	MDL	001
Lead (Pb)	0.009	%(w/w)	0.002	ND
Comment	PASS			

Note :

- (1) The limit is referenced to the requirement as stated in the County of San Francisco Superior Court, Case No. CGC-09-489839/CGC-08-476552/CGC-11-508435/CGC-01-319336/CGC-10-505118/County of Santa Clara Case No 110 CV 172362/the Superior Court of the State of California Case No CIV 1003366/County of Alameda Superior Court, RG 10-530436/10-530300/RG-07-356892/RG-10-514803/County of Contra Costa Case No. CGC-09-485784/County of Marin Case No. CIV-10-00626/ Senate Bill No. 929 and Public Law (Consumer Product Safety Improvement Act of 2008, CPSIA).



This document is issued by the Company subject to its General Conditions of Service printed overleaf, available on request or accessible at <http://www.sgs.com/en/Terms-and-Conditions.aspx> and, for electronic format documents, subject to Terms and Conditions for Electronic Documents at <http://www.sgs.com/en/Terms-and-Conditions/Terms-e-Document.aspx>. Attention is drawn to the limitation of liability, indemnification and jurisdiction issues defined therein. Any holder of this document is advised that information contained hereon reflects the Company's findings at the time of its intervention only and within the limits of Client's instructions, if any. The Company's sole responsibility is to its Client and this document does not exonerate parties to a transaction from exercising all their rights and obligations under the transaction documents. This document cannot be reproduced except in full, without prior written approval of the Company. Any unauthorized alteration, forgery or falsification of the content or appearance of this document is unlawful and offenders may be prosecuted to the fullest extent of the law. Unless otherwise stated the results shown in this test report refer only to the sample(s) tested and such sample(s) are retained for 30 days only.

Attention: To check the authenticity of testing /inspection report & certificate, please contact us at telephone: (86-755) 8307 1443, or email: CN.Doccheck@sgs.com

1/F, 1st Building European Industrial Park, No.1 Shunhuan Road, Wusha Section, Daliang Town, Shunde, Foshan, Guangdong, China 528333 t (86-757)22805888 f (86-757)22805858 www.sgsgroup.com.cn
中国·广东·佛山市顺德区大良街道办事处五沙顺和南路1号欧洲工业园一号楼首层 邮编: 528333 t (86-757)22805888 f (86-757)22805858 e sgs.china@sgs.com

Canada Consumer Product Safety Act (S.C. 2010, c. 21), Surface Coating Materials Regulations (SOR/2005-109) - Lead and Mercury in surface coating material

Test Method : With reference to Canada Health, Product Safety Laboratory, Book 5 - Laboratory Policies and Procedures, Part B: Test Methods Section, Method C-02.2:2008. Analysis was performed by ICP-OES, AAS & Mercury Analyzer.

With reference to Canada Health, Product Safety Laboratory, Book 5 - Laboratory Policies and Procedures, Part B: Test Methods Section, Method C-07:2014. Analysis was performed by ICP-OES, AAS & Mercury Analyzer.

Test Item(s)	Limit	Unit	MDL	001
Total Lead (Pb)	90	mg/kg	20	ND
Total Mercury (Hg)	10	mg/kg	1	ND
Comment				PASS

Flame retardant(s)

Test Method : With reference to US EPA Method 3550C:2007 and US EPA Method 8270D: 2007, analysis was performed by GC-MS,HPLC-DAD/MS.

Test Item(s)	CAS NO.	Limit	Unit	MDL	002	003	004
Tris(1,3-dichloro-2-propyl) Phosphate(TDCPP)	13674-87-8	1000	mg/kg	5	ND	ND	ND
Tris(2-chloroethyl) Phosphate(TCEP)	115-96-8	1000	mg/kg	5	ND	ND	ND
Tris(1-chloro-2-propyl) Phosphate (TCPP)	13674-84-5	1000	mg/kg	5	ND	ND	ND
2-Ethylhexyl tetrabromobenzoate(TBB)	183658-27-7	1000	mg/kg	5	ND	ND	ND
Bis(2-ethylhexyl)-2,3,4,5-tetrabromophthalate(TBPH)	26040-51-7	1000	mg/kg	5	ND	ND	ND
Triphenyl Phosphate(TPP)	115-86-6	1000	mg/kg	5	ND	ND	11
2,2-bis(chloromethyl)trimethylethylenebis(bis(2-chloroethyl)phosphate) (V6)	38051-10-4	1000	mg/kg	5	ND	ND	ND
4-(tert-Butyl)phenyl diphenyl phosphate (MDPP)	56803-37-3	1000	mg/kg	5	ND	ND	ND
Bis(tert-Butylphenyl) phenyl phosphate (DBPP)	65652-41-7	1000	mg/kg	5	ND	ND	ND



This document is issued by the Company subject to its General Conditions of Service printed overleaf, available on request or accessible at <http://www.sgs.com/en/Terms-and-Conditions.aspx> and, for electronic format documents, subject to Terms and Conditions for Electronic Documents at <http://www.sgs.com/en/Terms-and-Conditions/Terms-e-Documents.aspx>. Attention is drawn to the limitation of liability, indemnification and jurisdiction issues defined therein. Any holder of this document is advised that information contained hereon reflects the Company's findings at the time of its intervention only and within the limits of Client's instructions, if any. The Company's sole responsibility is to its Client and this document does not exonerate parties to a transaction from exercising all their rights and obligations under the transaction documents. This document cannot be reproduced except in full, without prior written approval of the Company. Any unauthorized alteration, forgery or falsification of the content or appearance of this document is unlawful and offenders may be prosecuted to the fullest extent of the law. Unless otherwise stated the results shown in this test report refer only to the sample(s) tested and such sample(s) are retained for 30 days only.

Attention: To check the authenticity of testing /inspection report & certificate, please contact us at telephone: (86-755) 8307 1443, or email: CN.Doccheck@sgs.com

SGS-CTI Standards Technical Services Co., Ltd.
Shunde Branch: Shunde Technical Goods Laboratory.

1/F, 1st Building European Industrial Park, No.1 Shunhuan Road, Wusha Section, Daliang Town, Shunde, Foshan, Guangdong, China 528333 t (86-757)22805888 f (86-757)22805858 www.sgs.com.cn
中国·广东·佛山市顺德区大良街道办事处五沙顺和南路1号欧洲工业园一号楼首层 邮编: 528333 t (86-757)22805888 f (86-757)22805858 e sgs.china@sgs.com

Test Report

No.: SDHL1603002546FT

Date: Aug.17, 2016

Page 31 of 47

Test Item(s)	CAS NO.	Limit	Unit	MDL	002	003	004
tris-(4-tert-Butylphenyl) phosphate (TBPP)	78-33-1/ 28777-70-0	1000	mg/kg	5	ND	ND	ND
Pentabromodiphenyl ethers (Penta-BDEs)	32534-81-9	1000	mg/kg	5	ND	ND	ND
Octabromodiphenyl ethers (Octa-BDEs)	32536-52-0	1000	mg/kg	5	ND	ND	ND
Decabromodiphenyl ether (Deca-BDE)	1163-19-5	1000	mg/kg	5	ND	ND	ND
Trimethyl Phosphate (TMP)	512-56-1	1000	mg/kg	5	ND	ND	ND
Tris-(2,3-dibromopropyl) Phosphate (Tris/TDBPP)	126-72-7	1000	mg/kg	5	ND	ND	ND
Tetrabromobisphenol A (TBBPA)	79-94-7	1000	mg/kg	5	ND	ND	ND
Hexabromocyclododecane (HBCDD)	3194-55-6	1000	mg/kg	10	ND	ND	ND
Decabromodiphenylethane (DEBD)	84852-53-9	1000	mg/kg	25	ND	ND	ND
Short Chained Chlorinated Paraffins (C10-C13)		1000	mg/kg	50	ND	ND	ND
Pentabromoethylbenzene (PBEB)	85-22-3	1000	mg/kg	5	ND	ND	ND
Tetrabromoethylcyclohexane (TBECH)	3322-93-8	1000	mg/kg	5	ND	ND	ND
Bis(hexachlorocyclopentadieno) cyclooctane(Dechlorane Plus)	13560-89-9	1000	mg/kg	5	ND	ND	ND
1,2-Bis(2,4,6-tribromophenoxy)ethane(BTBPE)	37853-59-1	1000	mg/kg	5	ND	ND	ND
5,6-Dibromo-1,10,11,12,13,13-hexachloro-11-tricyclo[8.2.1.02,9]tridecene(DBHC-TCTD)	51936-55-1	1000	mg/kg	5	ND	ND	ND

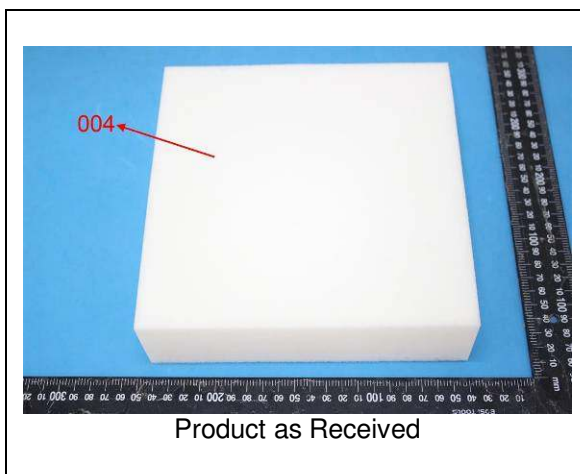
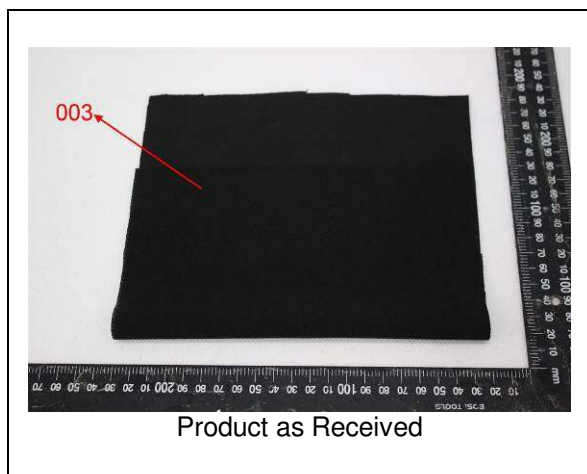
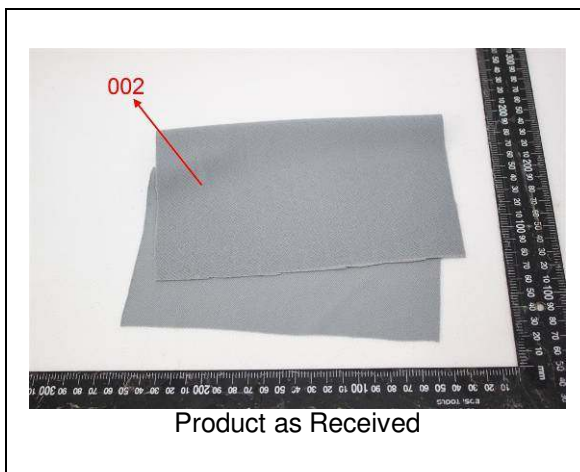
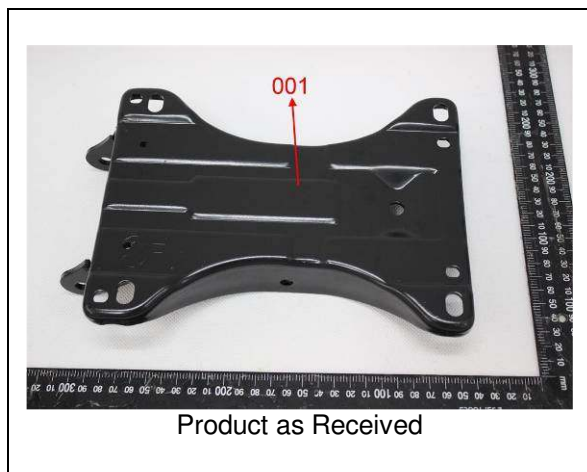


This document is issued by the Company subject to its General Conditions of Service printed overleaf, available on request or accessible at <http://www.sgs.com/en/Terms-and-Conditions.aspx> and, for electronic format documents, subject to Terms and Conditions for Electronic Documents at <http://www.sgs.com/en/Terms-and-Conditions/Terms-e-Documents.aspx>. Attention is drawn to the limitation of liability, indemnification and jurisdiction issues defined therein. Any holder of this document is advised that information contained hereon reflects the Company's findings at the time of its intervention only and within the limits of Client's instructions, if any. The Company's sole responsibility is to its Client and this document does not exonerate parties to a transaction from exercising all their rights and obligations under the transaction documents. This document cannot be reproduced except in full, without prior written approval of the Company. Any unauthorized alteration, forgery or falsification of the content or appearance of this document is unlawful and offenders may be prosecuted to the fullest extent of the law. Unless otherwise stated the results shown in this test report refer only to the sample(s) tested and such sample(s) are retained for 30 days only.

Attention: To check the authenticity of testing /inspection report & certificate, please contact us at telephone: (86-755) 8307 1443, or email: CN.Doccheck@sgs.com

1/F, 1st Building European Industrial Park, No.1 Shunhuan Road, Wusha Section, Daliang Town, Shunde, Foshan, Guangdong, China 528333 t (86-757)22805888 f (86-757)22805858 www.sgsgroup.com.cn
中国·广东·佛山市顺德区大良街道办事处五沙顺和南路1号欧洲工业园一号楼首层 邮编: 528333 t (86-757)22805888 f (86-757)22805858 e sgs.china@sgs.com

Sample for chemical tests



Result #2
Test 1
Test Conducted:

TB117 Requirements, Test Procedure and Apparatus for Testing the Smolder Resistance of Materials Used in Upholstered Furniture-2013 Section 1- Cover Fabric Test

I. Sample Details

Sample No.	Material / Color	Density of sample:
1	Fabric / Black	254 g/m ²
2	Fabric / Grey	255 g/m ²

II. Test Condition

---	Temperature	Relative humidity	Duration
Conditioning of test samples and cigarettes	(21±3) °C	RH < 55 %	24h

III. Acceptance Criteria:

1. A single mock-up test specimen fails to meet the requirements of this test procedure if any of the following criteria occurs:

- The mock-up test specimen continues to smolder after the 45 minutes test duration;
- A vertical char length of more than 1.8 inches develops on the cover fabric;
- The mock-up test specimen transitions to open flaming.

2. The cover fabric passes the test if three initial mock-up specimens pass the test, i.e., the cigarettes burn their full length and the mock-ups are no longer smoldering.

3. If more than one initial specimen fails, the cover fabric fails the test.

4. If any one of the three initial specimens fails, repeat the test on additional three specimens.

5. If all three additional specimens pass the test, the cover fabric passes the test. If any one of the additional three specimens fails, the cover fabric fails the test.

IV. Test Result
Sample 1

Specimen #	Duration of smouldering (min : sec.)	Open flaming (YES/NO)	Vertical Char Length (inches)	Rating
1	30min27s	NO	0.5	PASS
2	30min43s	NO	0.5	PASS
3	31min23s	NO	0.6	PASS

Sub-Conclusion: PASS

Sample 2

Specimen #	Duration of smouldering (min : sec.)	Open flaming (YES/NO)	Vertical Char Length (inches)	Rating
1	31min44s	NO	0.6	PASS
2	31min27s	NO	0.6	PASS
3	30min38s	NO	0.5	PASS

Sub-Conclusion: PASS



This document is issued by the Company subject to its General Conditions of Service printed overleaf, available on request or accessible at <http://www.sgs.com/en/Terms-and-Conditions.aspx> and, for electronic format documents, subject to Terms and Conditions for Electronic Documents at <http://www.sgs.com/en/Terms-and-Conditions/Terms-e-Documents.aspx>. Attention is drawn to the limitation of liability, indemnification and jurisdiction issues defined therein. Any holder of this document is advised that information contained hereon reflects the Company's findings at the time of its intervention only and within the limits of Client's instructions, if any. The Company's sole responsibility is to its Client and this document does not exonerate parties to a transaction from exercising all their rights and obligations under the transaction documents. This document cannot be reproduced except in full, without prior written approval of the Company. Any unauthorized alteration, forgery or falsification of the content or appearance of this document is unlawful and offenders may be prosecuted to the fullest extent of the law. Unless otherwise stated the results shown in this test report refer only to the sample(s) tested and such sample(s) are retained for 30 days only.

Attention: To check the authenticity of testing /inspection report & certificate, please contact us at telephone: (86-755) 8307 1443, or email: CN.Doccheck@sgs.com

1/F, 1st Building European Industrial Park, No.1 Shunshen Road, Wusha Section, Daliang Town, Shunde, Foshan, Guangdong, China 528333 t (86-757)22805888 f (86-757)22805858 www.sgsgroup.com.cn
中国·广东·佛山市顺德区大良街道办事处五沙顺和南路1号欧洲工业园一号楼首层 邮编: 528333 t (86-757)22805888 f (86-757)22805858 e sgs.china@sgs.com

Test Report

No.: SDHL1603002546FT

Date: Aug.17, 2016

Page 34 of 47

Test 2

Test Conducted:

TB117 Requirements, Test Procedure and Apparatus for Testing the Smolder Resistance of Materials Used in Upholstered Furniture-2013 Section 3-Resilient Filling Material Test

I. Sample Details

Material / Color:	Foam / White	Density of sample:	63.7 kg/m ³
-------------------	--------------	--------------------	------------------------

II. Test Condition

	Temperature	Relative humidity	Duration
Conditioning of test samples and cigarettes	(21±3) °C	RH < 55 %	24h

III. Acceptance Criteria:

1. A single mock-up test specimen fails to meet the requirements of this test procedure if any of the following criteria occurs:

- The mock-up test specimen continues to smolder after the 45 minute test duration;
- A vertical char length of more than 1.5 inches develops on the cover fabric.
- The mock-up test specimen transitions to open flaming.

2. The resilient filling material passes the test if three mock-up specimens pass the test.

3. If more than one specimen fails, the resilient filling material fails the test.

4. If any one of the three initial specimens fails, repeat the test on additional three specimens.

5. If all three additional specimens pass the test, the resilient filling material passes the test. If any one of the additional three specimens fails, the resilient filling material fails the test.

IV. Test Result

Specimen #	Duration of smouldering (min : sec.)	Open flaming (YES/NO)	Vertical Char Length (inches)	Rating
1	31min27s	NO	0.6	PASS
2	29min52s	NO	0.5	PASS
3	30min23s	NO	0.6	PASS

Conclusion: PASS

Test 3

Test Conducted:

This test is conducted accordance with CAN/CGSB 4.2 No. 27.5-2008 Textile Test Method – Flame Resistance – 45° Angle Test – One-Second Flame Impingement.

Sample details:

Sample No.	Materials / Color	Area density
1	Plain Surface Fabric / Black	254 g/m ²
2	Plain Surface Fabric / Grey	255 g/m ²

Laundering condition	Dry cleaning and Washing according to CAN/CGSB 4.2 No. 30.3
Conditioning	T: 105°C Duration: 60mins, then cool for 30mins in desiccator



This document is issued by the Company subject to its General Conditions of Service printed overleaf, available on request or accessible at <http://www.sgs.com/en/Terms-and-Conditions.aspx> and, for electronic format documents, subject to Terms and Conditions for Electronic Documents at <http://www.sgs.com/en/Terms-and-Conditions/Terms-e-Documents.aspx>. Attention is drawn to the limitation of liability, indemnification and jurisdiction issues defined therein. Any holder of this document is advised that information contained hereon reflects the Company's findings at the time of its intervention only and within the limits of Client's instructions, if any. The Company's sole responsibility is to its Client and this document does not exonerate parties to a transaction from exercising all their rights and obligations under the transaction documents. This document cannot be reproduced except in full, without prior written approval of the Company. Any unauthorized alteration, forgery or falsification of the content or appearance of this document is unlawful and offenders may be prosecuted to the fullest extent of the law. Unless otherwise stated the results shown in this test report refer only to the sample(s) tested and such sample(s) are retained for 30 days only.

Attention: To check the authenticity of testing /inspection report & certificate, please contact us at telephone: (86-755) 8307 1443, or email: CN.Doccheck@sgs.com

1/F, 1st Building European Industrial Park, No.1 Shunshen Road, Wusha Section, Daliang Town, Shunde, Foshan, Guangdong, China 528333 t (86-757)22805888 f (86-757)22805858 www.sgschina.com.cn
中国·广东·佛山市顺德区大良街道办事处五沙顺和南路1号欧洲工业园一号楼首层 邮编: 528333 t (86-757)22805888 f (86-757)22805858 e sgs.china@sgs.com

Test Criteria:

SOR/2011-22 Textile Flammability Regulations Clause 4 (Minimum requirements for flammability)

- 1) The flame spread time for textile products without a raised fibre surface must be greater than 3.5 seconds.
- 2) The flame spread time for textile products with a raised fibre surface that exhibits ignition or fusion of its base fibres must be greater than 4 seconds.

Test results:
Sample 1

Rate of Burning (sec)					
After dry cleaning & washing			Retest* (if required)		
Specimen #	Length &Face	Base ignited	Specimen #	Length &Face	Base ignited
1	DNI	N/A	6	DNI	N/A
2	DNI	N/A	7	DNI	N/A
3	DNI	N/A	8	DNI	N/A
4	DNI	N/A	9	DNI	N/A
5	DNI	N/A	10	DNI	N/A
Average	NRBT	---	Average	NRBT	---

Conclusion: PASS
Sample 2

Rate of Burning (sec)					
After dry cleaning & washing			Retest* (if required)		
Specimen #	Length &Face	Base ignited	Specimen #	Length &Face	Base ignited
1	DNI	N/A	6	DNI	N/A
2	DNI	N/A	7	DNI	N/A
3	DNI	N/A	8	DNI	N/A
4	DNI	N/A	9	DNI	N/A
5	DNI	N/A	10	DNI	N/A
Average	NRBT	---	Average	NRBT	---

Conclusion: PASS


This document is issued by the Company subject to its General Conditions of Service printed overleaf, available on request or accessible at <http://www.sgs.com/en/Terms-and-Conditions.aspx> and, for electronic format documents, subject to Terms and Conditions for Electronic Documents at <http://www.sgs.com/en/Terms-and-Conditions/Terms-e-Document.aspx>. Attention is drawn to the limitation of liability, indemnification and jurisdiction issues defined therein. Any holder of this document is advised that information contained hereon reflects the Company's findings at the time of its intervention only and within the limits of Client's instructions, if any. The Company's sole responsibility is to its Client and this document does not exonerate parties to a transaction from exercising all their rights and obligations under the transaction documents. This document cannot be reproduced except in full, without prior written approval of the Company. Any unauthorized alteration, forgery or falsification of the content or appearance of this document is unlawful and offenders may be prosecuted to the fullest extent of the law. Unless otherwise stated the results shown in this test report refer only to the sample(s) tested and such sample(s) are retained for 30 days only.

Attention: To check the authenticity of testing /inspection report & certificate, please contact us at telephone: (86-755) 8307 1443, or email: CN.Doccheck@sgs.com

1/F, 1st Building European Industrial Park, No.1 Shunshen Road, Wusha Section, Dailang Town, Shunde, Foshan, Guangdong, China 528333 t (86-757)22805888 f (86-757)22805858 www.sgsgroup.com.cn
中国·广东·佛山市顺德区大良街道办事处五沙顺和南路1号欧洲工业园一号楼首层 邮编: 528333 t (86-757)22805888 f (86-757)22805858 e sgs.china@sgs.com

Remark:

NRBT --- No recordable burning time. N/A--- Not Applicable

DNI --- Did not ignite.

IBE --- Ignited, but self-extinguished before the flame reaches the stop cord or fails to burn the stop thread.

* --- if any one specimen does not ignite, self-extinguishes before the flame reaches the stop cord or otherwise fails to burn the stop thread, or burns too rapidly for specified requirements, then test an additional five specimens.

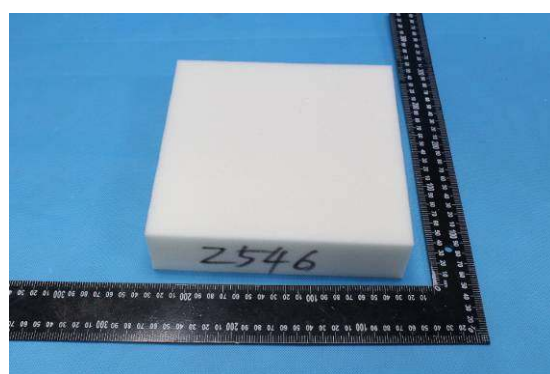
Photo Appendix:



Sample 1



Sample 2



Foam for test 2

Result #3
Requirement
Color Fastness To Water Spotting

(AATCC 104-2010)

	(A)	(B)	(C)	(D)	
Change in shade					/
After 2 min	4.0	4.5	4.5	3.0	
After Dry	4.5	4.5	4.5	4.5	Min. 4.0

Color Fastness To Crocking

(AATCC 8-2013)

	(A)	(B)	(C)	(D)	
Dry staining	4.5	4.5	4.5	4.5	Min.4.0
Wet staining	4.5	4.5	4.5	4.5	Min.3.0

Color Fastness To Light

(AATCC TM 16.3 -2014; Option 3; Xenon Arc Lamp)

After 10'AATCC Fading Units

	(A)	(B)	(C)	(D)	
Change in shade	4.5	4.5	4.5	4.5	Min.4.0

Remark: Grey Scale Rating is based on the 5-step scale of 1 to 5, where 1 is bad and 5 is good

Tensile Strength

(ASTM D 5034-09 (Reapproved 2013); CRE-1"grab)

	(A)	(B)	(C)	(D)	
Warp/Length(lbf)	N/A	N/A	253.3	256.5	Min.50lbf
Weft/Width(lbf)	N/A	N/A	335.2	338.2	Min.50lbf

Tearing Strength

(ASTM D1424-09(Reapproved 2013); Elmendorf Tear.)

	(A)	(B)	(C)	(D)	
Warp yarns torn (lbf)	N/A	N/A	Exceeds 14.4	Exceeds 14.4	Min.4.5lbf
Weft yarns torn (lbf)	N/A	N/A	Exceeds 14.4	Exceeds 14.4	Min.4.0lbf



This document is issued by the Company subject to its General Conditions of Service printed overleaf, available on request or accessible at <http://www.sgs.com/en/Terms-and-Conditions.aspx> and, for electronic format documents, subject to Terms and Conditions for Electronic Documents at <http://www.sgs.com/en/Terms-and-Conditions/Terms-e-Document.aspx>. Attention is drawn to the limitation of liability, indemnification and jurisdiction issues defined therein. Any holder of this document is advised that information contained hereon reflects the Company's findings at the time of its intervention only and within the limits of Client's instructions, if any. The Company's sole responsibility is to its Client and this document does not exonerate parties to a transaction from exercising all their rights and obligations under the transaction documents. This document cannot be reproduced except in full, without prior written approval of the Company. Any unauthorized alteration, forgery or falsification of the content or appearance of this document is unlawful and offenders may be prosecuted to the fullest extent of the law. Unless otherwise stated the results shown in this test report refer only to the sample(s) tested and such sample(s) are retained for 30 days only.

Attention: To check the authenticity of testing /inspection report & certificate, please contact us at telephone: (86-755) 8307 1443, or email: CN.Doccheck@sgs.com

1/F, 1st Building European Industrial Park, No.1 Shunshen Road, Wusha Section, Daliang Town, Shunde, Foshan, Guangdong, China 528333 t (86-757)22805888 f (86-757)22805858 www.sgsgroup.com.cn
中国·广东·佛山市顺德区大良街道办事处五沙顺和南路1号欧洲工业园一号厂房首层 邮编: 528333 t (86-757)22805888 f (86-757)22805858 e sgs.china@sgs.com

Requirement

Taber Abrasion

(ASTM D3884-09(Reapproved 2013)ε1, Taber (RPDH) Abrader H-18 wheel, Load:-500g/wheel.)

	(A)	(B)	(C)	(D)	
End point (cycles)	30	30	150	170	Exceeds 300 cycles
Weight loss (After -300cycles)(%)	3.4	4.0	6.0	2.1	Max. 10%

Fabric Weight Per Unit Area

(ASTM D3776/D3776M-2009a; Option C)

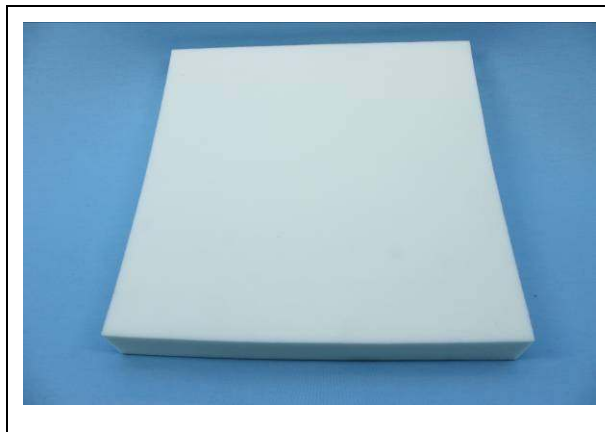
	(A)	(B)	(C)	(D)	
(g/m ²)	267	269	340	328	/
(oz/yd ²)	7.88	7.94	10.0	9.68	/

Sample Photo



Result #4

Original Sample Photo:



1.Test Item: Ash Content

Sample Description: Sponge

Test Method: Provided by client

Test Condition: 700℃, 4h

Test Result:

Test item	Test result
Ash Content	0.052%

2.Test Item: Fatigue Test (Test B₁)

Sample Description: Sponge

Test Method: With reference to ASTM D3574-11 Test I₃ and client's requirement

Test Condition:

Specimen: 380 mm×380 mm×51 mm

Fatigue condition: Compress to 20% thickness, 70 cycles/min, 80000 cycles

Recovery condition: 23±2 °C, 50±5% RH, 10 min

Testing speed: 50 mm/min

Lab Environmental Condition: 23±2 °C, 50±5% RH

Test Report

No.: SDHL1603002546FT

Date: Aug.17, 2016

Page 40 of 47

Test Result:

Test Item	Test Result
Loss in Thickness	2.0 %
Loss of 25% Indentation Force Deflection	14.0 %
Loss of 65% Indentation Force Deflection	4.4 %

Note:

1. Loss in Thickness, % = (Thickness before fatigue – Thickness after fatigue)/ Thickness before fatigue×100
2. Loss of Indentation Force Deflection, % = (Indentation Force Deflection before fatigue - Indentation Force Deflection after fatigue) / Indentation Force Deflection before fatigue×100

3.Test Item: Fatigue Test (Test B₂)

Sample Description: Sponge

Test Method: With reference to ASTM D3574-11 Test I₃ and client's requirement

Test Condition:

Specimen: 380 mm×380 mm×50 mm

Fatigue condition: Compress to 20% thickness, 70 cycles/min, 80000 cycles

Recovery condition: 23±2 °C, 50±5% RH, 10 min

Testing speed: 50 mm/min

Lab Environmental Condition: 23±2 °C, 50±5% RH

Test Result:

Test Item	Test Result
Loss in IRGL(4.5N)	1.8 %
Loss in IRGL(110N)	10.3 %
Loss in IRGL(220N)	13.6 %

Note: Loss in IRGL, % = (IRGL before fatigue –IRGL after fatigue)/ IRGL before fatigue×100



This document is issued by the Company subject to its General Conditions of Service printed overleaf, available on request or accessible at <http://www.sgs.com/en/Terms-and-Conditions.aspx> and, for electronic format documents, subject to Terms and Conditions for Electronic Documents at <http://www.sgs.com/en/Terms-and-Conditions/Terms-e-Documents.aspx>. Attention is drawn to the limitation of liability, indemnification and jurisdiction issues defined therein. Any holder of this document is advised that information contained hereon reflects the Company's findings at the time of its intervention only and within the limits of Client's instructions, if any. The Company's sole responsibility is to its Client and this document does not exonerate parties to a transaction from exercising all their rights and obligations under the transaction documents. This document cannot be reproduced except in full, without prior written approval of the Company. Any unauthorized alteration, forgery or falsification of the content or appearance of this document is unlawful and offenders may be prosecuted to the fullest extent of the law. Unless otherwise stated the results shown in this test report refer only to the sample(s) tested and such sample(s) are retained for 30 days only.

Attention: To check the authenticity of testing /inspection report & certificate, please contact us at telephone: (86-755) 8307 1443, or email: CN.Doccheck@sgs.com

1/F, 1st Building European Industrial Park, No.1 Shunshen Road, Wusha Section, Daliang Town, Shunde, Foshan, Guangdong, China 528333 t (86-757)22805888 f (86-757)22805858 www.sgsgroup.com.cn
中国·广东·佛山市顺德区大良街道办事处五沙顺和南路1号欧洲工业园一号楼首层 邮编: 528333 t (86-757)22805888 f (86-757)22805858 e sgs.china@sgs.com

4.Test Item: Hardness (Indentation Technique)

Sample Description: Sponge

Test Method: ASTM D3574-11 Test B₁

Test Condition:

Specimen: 380 mm×380 mm×51 mm

Testing speed: 50 mm/min

Lab Environmental Condition: 23±2 °C, 50±5% RH

Test Result:

Test Item	Test Result	
Hardness (Indentation Technique)	25%IFD	143 N
	65%IFD	366 N

5.Test Item: Indentation Residual Gauge Load Test (IRGL)

Sample Description: Sponge

Test Method: ASTM D3574-11 Test B₂

Test Condition:

Specimen: 380 mm×380 mm×50 mm

Testing speed: 50 mm/min

Lab Environment Condition: 23±2 °C, 50±5% RH

Test Result:

Test Item	Test Result
Indentation Residual Gauge Load Test (IRGL)	IRGL(4.5N): 50.1 mm
	IRGL(110N): 44.6 mm
	IRGL(220N): 26.5 mm

SAMPLE INFORMATION AND PICTURES

Weight: 22.30 kg

Overall Dimensions: 735 mm W x 705 mm D x 1080~1175 mm H

Other Dimensions: Upper frame: 700 mm W x 570~620 mm D;
Under frame: Base radius 355 mm, Base weight 2.25 kg.

Sample as Received



View 1 – Sample 1 photo



View 2 – Sample 1 photo



View 3 – Sample 1 photo



View 4 – Sample 1 photo



View 5 – Sample 2 photo



View 6 – Sample 2 photo



View 7 – Sample 2 photo



View 8 – Sample 2 photo



View 9 – Sample photo



View 10 – Sample photo



View 11 – Sample photo



View 12 – Sample photo



View 13 – Sample photo



View 14 – Sample photo



View 15 – Sample #1 before salt spray test



View 16 –Sample #1 after salt spray test



View 17 -Sample #2 before salt spray test



View 18 -Sample #2 after salt spray test



View 19 - Sample #3 before salt spray test



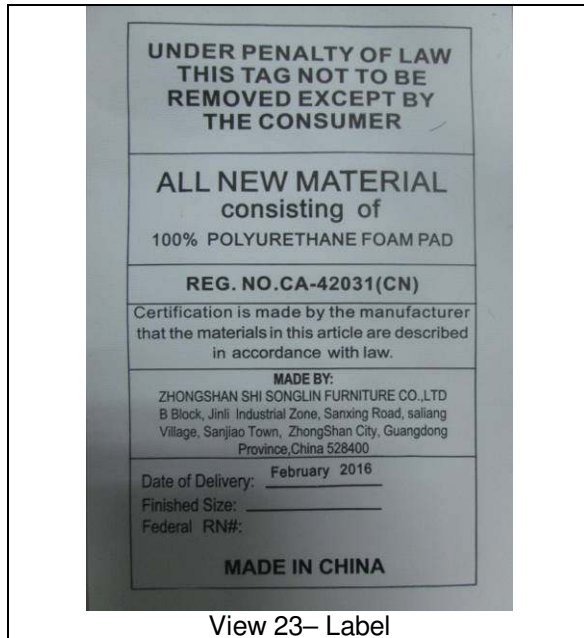
View 20 -Sample #3 after salt spray test



View 21 - Sample #4 before salt spray test



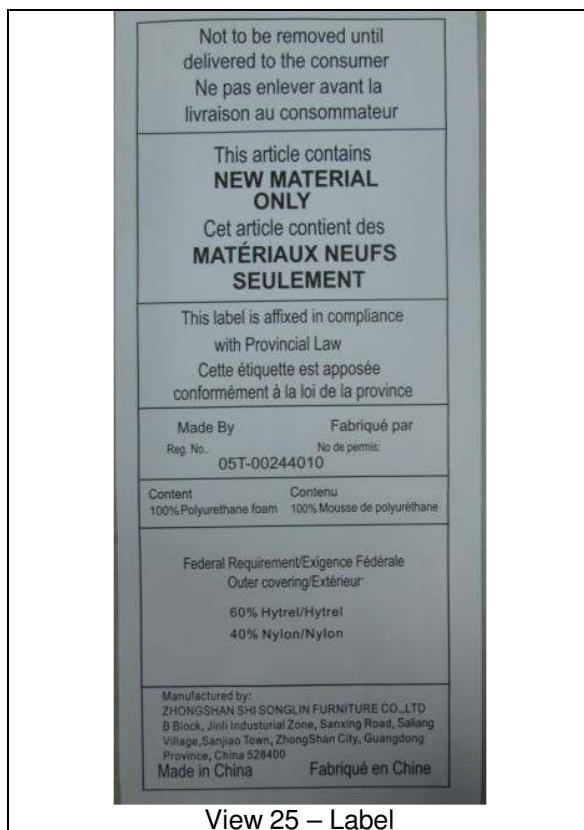
View 22 -Sample #4 after salt spray test



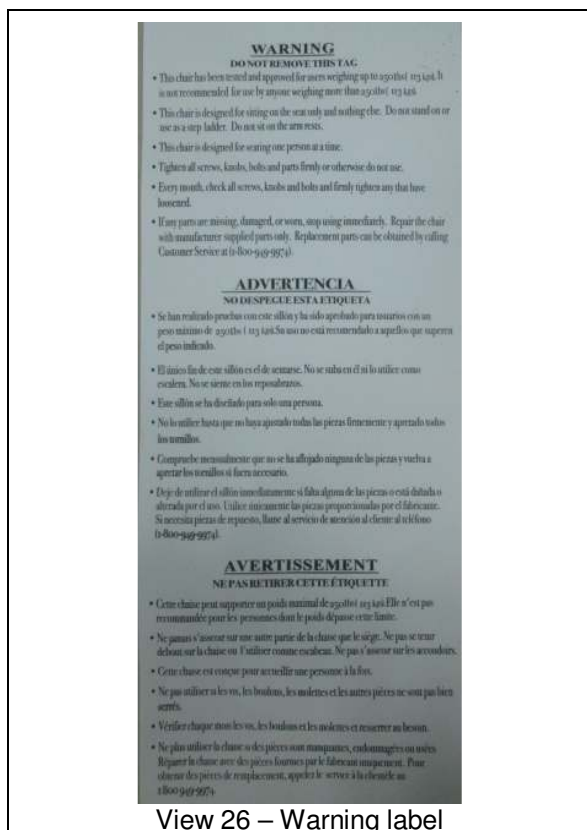
View 23- Label



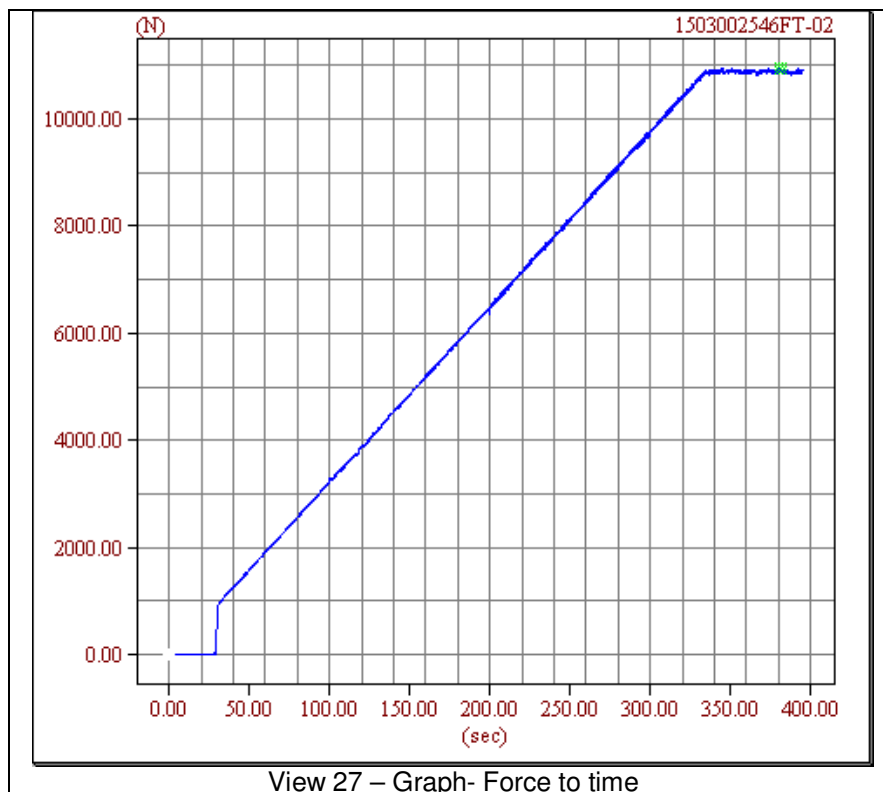
View 24 - Label



View 25 - Label



View 26 - Warning label



End of Report