

TEST REPORT

Mechanical & Hardgoods Laboratory

Report No. : HL60434A/2015

Page : 1 of 8

Date : AUG. 07, 2015

RAYNOR MARKETING LTD.

525 Hempstead, Turnpike, West Hempstead, NY 11552, USA

The following merchandise was submitted and identified by the applicant as:

Product Description: Multifunctional Task Chair with Adj arm
Style/Item No.: LLR20979, LLR20980
Buyer/Order No.: RAYNOR MARKETING LTD
Manufacturer/Vendor: SONG LIN FURNITURE CO., LTD.
Country of Origin: China

We have tested the submitted sample(s) as requested and the following results were obtained:

Test Requested: (1). According to ISTA 3A: 2008 Packaged-Product Test
(Excluding Atmospheric conditioning & Random Vibration under Low Pressure)
(2). Bursting Strength Test

Test Criteria:

Defined by client as below

- (1). For product(s): Examine the appearance of the product by visual check after package test. No visible damage (such as crack, breakage,...etc.) after package test.
- (2). For package: The integrity of package shall be retained. The container still affords reasonable protection to the contents, maintaining the correct position of product, and sufficient rigidity.

Test Method & Result: ---See following sheet(s)---

Date of Receipt: Jun. 24, 2015 & Jul. 03 2015 & Aug. 03, 2015

Testing Period: Jun. 24, 2015 ~ Jul. 23, 2015 & Aug. 03, 2015 ~ Aug. 06, 2015

Conclusion:

The submitted sample **complies with** the ISTA 3A:2008 Packaged-Product Test (Excluding Atmospheric conditioning & Random Vibration under Low Pressure) and Bursting Strength test.

Signed for and on behalf of
SGS Taiwan Ltd.

Lawrence Yang
Asst. Supervisor



This document is issued by the Company subject to its General Conditions of Service printed overleaf, available on request or accessible at <http://www.sgs.com/en/Terms-and-Conditions.aspx> and, for electronic format documents, subject to Terms and Conditions for Electronic Documents at <http://www.sgs.com/en/Terms-and-Conditions/Terms-e-Documents.aspx>. Attention is drawn to the limitation of liability, indemnification and jurisdiction issues defined therein. Any holder of this document is advised that information contained hereon reflects the Company's findings at the time of its intervention only and within the limits of client's instruction, if any. The Company's sole responsibility is to its Client and this document does not exonerate parties to a transaction from exercising all their rights and obligations under the transaction documents. This document cannot be reproduced, except in full, without prior written approval of the Company. Any unauthorized alteration, forgery or falsification of the content or appearance of this document is unlawful and offenders may be prosecuted to the fullest extent of the law. Unless otherwise stated the results shown in this test report refer only to the sample(s) tested

TEST REPORT

Mechanical & Hardgoods Laboratory

Report No. : HL60434A/2015

Page : 2 of 8

Test Method & Test Result:**(1). Package test -- ISTA 3A:****Test Equipment:**

Name	Brand	Model	Serial No.
Drop Tester	King Design	KD-128A	WR112197097
Electrodynamics Type Vibration Tester	Vibration Source	VS-1000V HTBH 6060	1099
Accelerometer	PCB	J352C34	146403

Lab Environmental Conditions:Ambient temperature: 25±3 °CRelative humidity: 55±5 %RH**Test Sequence:**

Package test includes several tests, the test sequence is as following:

Test Sequence	Test Item
1	Atmospheric Preconditioning test
3	First Drop test
4	Random Vibration test
6	Second Drop test

Test Method/ Specification:**1. Atmospheric Preconditioning test:**Temperature: 25 °CHumidity: 55 %RHDuration: 12 hours

This document is issued by the Company subject to its General Conditions of Service printed overleaf, available on request or accessible at <http://www.sgs.com/en/Terms-and-Conditions.aspx> and, for electronic format documents, subject to Terms and Conditions for Electronic Documents at <http://www.sgs.com/en/Terms-and-Conditions/Terms-e-Document.aspx>. Attention is drawn to the limitation of liability, indemnification and jurisdiction issues defined therein. Any holder of this document is advised that information contained hereon reflects the Company's findings at the time of its intervention only and within the limits of client's instruction, if any. The Company's sole responsibility is to its Client and this document does not exonerate parties to a transaction from exercising all their rights and obligations under the transaction documents. This document cannot be reproduced, except in full, without prior written approval of the Company. Any unauthorized alteration, forgery or falsification of the content or appearance of this document is unlawful and offenders may be prosecuted to the fullest extent of the law. Unless otherwise stated the results shown in this test report refer only to the sample(s) tested

TEST REPORT

Mechanical & Hardgoods Laboratory

Report No. : HL60434A/2015

Page : 3 of 8

Test Method/ Specification-- Continued:

3. First Drop test:

Drop sequence:

Drop Number	Drop Height	Specific Face, Edge or Corner
1	46 cm	Edge 3-4
2	46 cm	Edge 3-6
3	46 cm	Edge 4-6
4	46 cm	Corner 3-4-6
5	46 cm	Corner 2-3-5
6	46 cm	Edge 2-3
7	46 cm	Edge 1-2
8	91 cm	Face 3
9	46 cm	Face 3

4. Random Vibration test:

(1) Over-The-Road Trailer Simulation

Wave form: Random

Frequency: 1~200 Hz

Frequency (Hz)	PSD (g ² /Hz)
1.0	0.0007
3.0	0.02
5.0	0.02
7.0	0.001
12.0	0.001
15.0	0.004
24.0	0.004
28.0	0.001
36.0	0.001
42.0	0.003
75.0	0.003
200.0	0.000004
⇨equivalent to 0.53 G _{rms}	

This document is issued by the Company subject to its General Conditions of Service printed overleaf, available on request or accessible at <http://www.sgs.com/en/Terms-and-Conditions.aspx> and, for electronic format documents, subject to Terms and Conditions for Electronic Documents at <http://www.sgs.com/en/Terms-and-Conditions/Terms-e-Document.aspx>. Attention is drawn to the limitation of liability, indemnification and jurisdiction issues defined therein. Any holder of this document is advised that information contained hereon reflects the Company's findings at the time of its intervention only and within the limits of client's instruction, if any. The Company's sole responsibility is to its Client and this document does not exonerate parties to a transaction from exercising all their rights and obligations under the transaction documents. This document cannot be reproduced, except in full, without prior written approval of the Company. Any unauthorized alteration, forgery or falsification of the content or appearance of this document is unlawful and offenders may be prosecuted to the fullest extent of the law. Unless otherwise stated the results shown in this test report refer only to the sample(s) tested

TEST REPORT

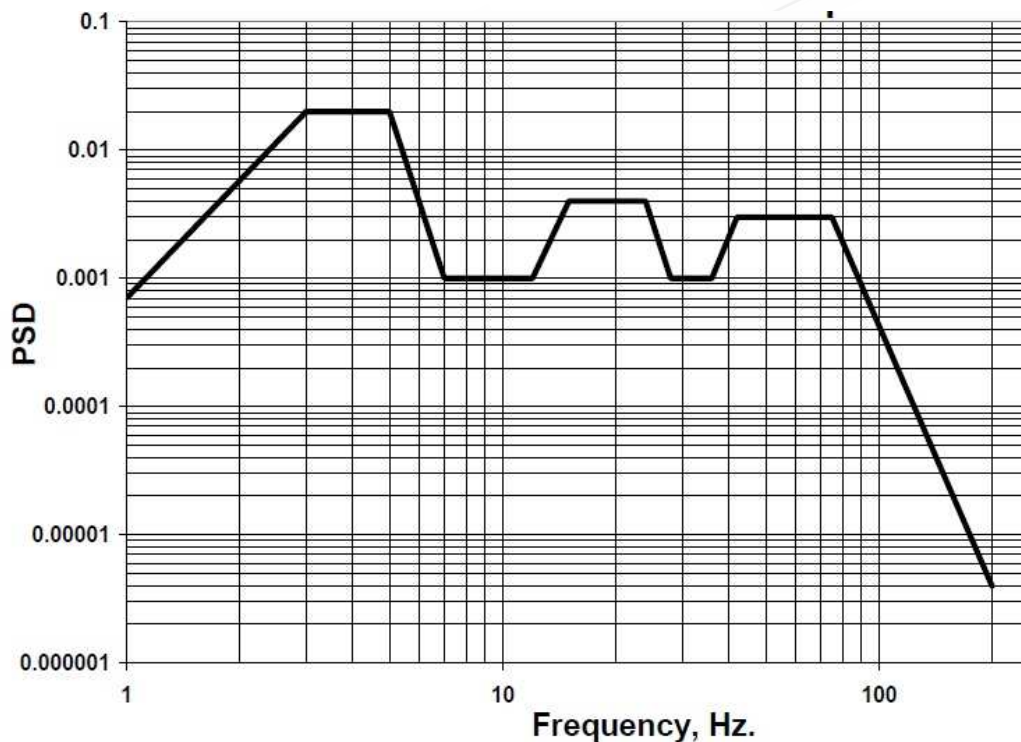
Mechanical & Hardgoods Laboratory

Report No. : HL60434A/2015

Page : 4 of 8

Test Orientation/ Duration: As shown in table below

Formula, with values, used to calculate	Top Load (kg)	Test Duration (minutes)	Identify face of resting on table surface
TL-H	84	60	Face 3
TL-W	96	30	Face 4
TL-L	76	30	Face 6



This document is issued by the Company subject to its General Conditions of Service printed overleaf, available on request or accessible at <http://www.sgs.com/en/Terms-and-Conditions.aspx> and, for electronic format documents, subject to Terms and Conditions for Electronic Documents at <http://www.sgs.com/en/Terms-and-Conditions/Terms-e-Documents.aspx>. Attention is drawn to the limitation of liability, indemnification and jurisdiction issues defined therein. Any holder of this document is advised that information contained hereon reflects the Company's findings at the time of its intervention only and within the limits of client's instruction, if any. The Company's sole responsibility is to its Client and this document does not exonerate parties to a transaction from exercising all their rights and obligations under the transaction documents. This document cannot be reproduced, except in full, without prior written approval of the Company. Any unauthorized alteration, forgery or falsification of the content or appearance of this document is unlawful and offenders may be prosecuted to the fullest extent of the law. Unless otherwise stated the results shown in this test report refer only to the sample(s) tested

TEST REPORT

Mechanical & Hardgoods Laboratory

Report No. : HL60434A/2015

Page : 5 of 8

Test Method/ Specification-- Continued:**4. Random Vibration test--Continued:**

(2) Pick-up and delivery vehicle

Wave form: RandomFrequency: 1~200 Hz

Frequency (Hz)	PSD (g ² /Hz)
1.0	0.001
3.0	0.035
4.0	0.035
7.0	0.0003
13.0	0.0003
15.0	0.001
24.0	0.001
29.0	0.0001
50.0	0.0001
70.0	0.002
100.0	0.002
200.0	0.00005
⇨equivalent to 0.46 G _{rms}	

Test Orientation/ Duration: As shown in table below

Identify face of resting on table surface	Test Duration (minutes)
Face 3	30

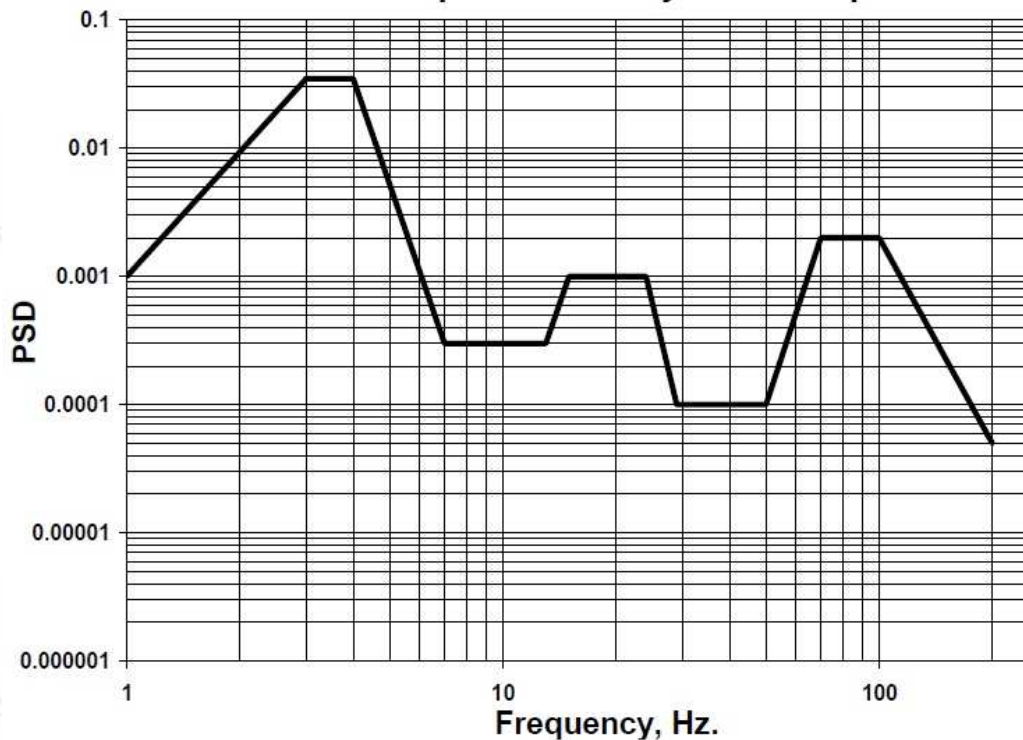
This document is issued by the Company subject to its General Conditions of Service printed overleaf, available on request or accessible at <http://www.sgs.com/en/Terms-and-Conditions.aspx> and, for electronic format documents, subject to Terms and Conditions for Electronic Documents at <http://www.sgs.com/en/Terms-and-Conditions/Terms-e-Document.aspx>. Attention is drawn to the limitation of liability, indemnification and jurisdiction issues defined therein. Any holder of this document is advised that information contained hereon reflects the Company's findings at the time of its intervention only and within the limits of client's instruction, if any. The Company's sole responsibility is to its Client and this document does not exonerate parties to a transaction from exercising all their rights and obligations under the transaction documents. This document cannot be reproduced, except in full, without prior written approval of the Company. Any unauthorized alteration, forgery or falsification of the content or appearance of this document is unlawful and offenders may be prosecuted to the fullest extent of the law. Unless otherwise stated the results shown in this test report refer only to the sample(s) tested

TEST REPORT

Mechanical & Hardgoods Laboratory

Report No. : HL60434A/2015

Page : 6 of 8



6. Second Drop test:

Drop sequence:

Drop Number	Drop Height	Specific Face, Edge or Corner
10	46 cm	Edge 3-4
11	46 cm	Edge 3-6
12	46 cm	Edge 1-5
13	46 cm	Corner 3-4-6
14	46 cm	Corner 1-2-6
15	46 cm	Corner 1-4-5
16	91 cm	Most critical or damage-prone flat orientation
17	46 cm	Face 3 on hazard

Physical Description:

Carton Style: Standard
 Carton size: L:690 mm W: 580 mm H: 650 mm
 Weight: 25.3 kg

This document is issued by the Company subject to its General Conditions of Service printed overleaf, available on request or accessible at <http://www.sgs.com/en/Terms-and-Conditions.aspx> and, for electronic format documents, subject to Terms and Conditions for Electronic Documents at <http://www.sgs.com/en/Terms-and-Conditions/Terms-e-Document.aspx>. Attention is drawn to the limitation of liability, indemnification and jurisdiction issues defined therein. Any holder of this document is advised that information contained hereon reflects the Company's findings at the time of its intervention only and within the limits of client's instruction, if any. The Company's sole responsibility is to its Client and this document does not exonerate parties to a transaction from exercising all their rights and obligations under the transaction documents. This document cannot be reproduced, except in full, without prior written approval of the Company. Any unauthorized alteration, forgery or falsification of the content or appearance of this document is unlawful and offenders may be prosecuted to the fullest extent of the law. Unless otherwise stated the results shown in this test report refer only to the sample(s) tested

TEST REPORT

Mechanical & Hardgoods Laboratory

Report No. : HL60434A/2015

Page : 7 of 8

Description of Package:

1. Double wall corrugated carton was closed with clear plastic tape and fixation four plastic straps
2. The arms, screws and casters were put into the small box.
3. The back was packed by transparent plastic bag.
4. The base was protected by paperboard and the seat put into the small box. (as shown in photo B~E)
5. Finally, place all parts into the carton and put two paper tubes into the carton for supporting.

Test Result:

Pass X Failed

(2). Bursting Strength Test

Sample	Method	Outer → Inner (psi)	Inner → Outer (psi)
Carton	Refer to TAPPI T810	313.3 (Avg)	318.1 (Avg)

Requirement: 250 psi

Test Photos:



Photo A: Appearance of package



Photo B: Package style-1



Photo C: Package style-2



Photo D: Package style-3

This document is issued by the Company subject to its General Conditions of Service printed overleaf, available on request or accessible at <http://www.sgs.com/en/Terms-and-Conditions.aspx> and, for electronic format documents, subject to Terms and Conditions for Electronic Documents at <http://www.sgs.com/en/Terms-and-Conditions/Terms-e-Document.aspx>. Attention is drawn to the limitation of liability, indemnification and jurisdiction issues defined therein. Any holder of this document is advised that information contained hereon reflects the Company's findings at the time of its intervention only and within the limits of client's instruction, if any. The Company's sole responsibility is to its Client and this document does not exonerate parties to a transaction from exercising all their rights and obligations under the transaction documents. This document cannot be reproduced, except in full, without prior written approval of the Company. Any unauthorized alteration, forgery or falsification of the content or appearance of this document is unlawful and offenders may be prosecuted to the fullest extent of the law. Unless otherwise stated the results shown in this test report refer only to the sample(s) tested

TEST REPORT

Mechanical & Hardgoods Laboratory

Report No. : HL60434A/2015

Page : 8 of 8

Test Photos:



Photo E: Package style-4



Photo F: Appearance of the products



Photo G: Random Vibration test-Face 3



Photo H: Random Vibration test-Face 4



Photo I: Random Vibration test-Face 6



Photo V: Random Vibration test-Face 3

--- End of Report ---

This document is issued by the Company subject to its General Conditions of Service printed overleaf, available on request or accessible at <http://www.sgs.com/en/Terms-and-Conditions.aspx> and, for electronic format documents, subject to Terms and Conditions for Electronic Documents at <http://www.sgs.com/en/Terms-and-Conditions/Terms-e-Document.aspx>. Attention is drawn to the limitation of liability, indemnification and jurisdiction issues defined therein. Any holder of this document is advised that information contained hereon reflects the Company's findings at the time of its intervention only and within the limits of client's instruction, if any. The Company's sole responsibility is to its Client and this document does not exonerate parties to a transaction from exercising all their rights and obligations under the transaction documents. This document cannot be reproduced, except in full, without prior written approval of the Company. Any unauthorized alteration, forgery or falsification of the content or appearance of this document is unlawful and offenders may be prosecuted to the fullest extent of the law. Unless otherwise stated the results shown in this test report refer only to the sample(s) tested