

## TEST REPORT

Report No. : HL30030/2007  
Page : 1 of 2  
Date : MAR. 03, 2007

### FUH SHYANG CO., LTD.

No.27, Cherng Gong One St., Boh Doou Tsuen, Min Shyong Hsiang,  
Chia Yi, Taiwan, R.O.C.

The following merchandise was submitted and identified by the applicant as:

Product Description: Chair Base  
Style/Item No.: H350  
Manufacturer/Vendor: FUH SHYANG CO., LTD.  
Country of Origin: Taiwan

We have tested the submitted sample(s) as requested and the following results were obtained:

Test Required: Sect. 7 Base Test - Static of ANSI/BIFMA X5.1-2002

#### Test Method:

- 1) Place the base on a test platform with blocks under base arms.
- 2) A force of 11,120N (2,500 lbf) shall be applied for 1 minute.
- 3) Remove the force.
- 4) Apply a second force of 11,120N (2,500 lbf) for 1 minute.
- 5) Remove the load and evaluate the product in accordance with the acceptance level Section 7.5.
- 6) Increase the load until the chair base is broken. (Requested by the client).

#### Test Results:


Sample	Broken load	Result	Remark
H350	3849.0 lbf	<b>Pass</b>	Maximum broken load.

\*The max. broken load is for reference only.

Conclusion: In our opinion, the submitted sample complies with Sect. 7 of ANSI/BIFMA X5.1-2002 for General - Purpose Office Chair.

Testing period: 2007/03/01 ~ 2007/03/03

Signed for and on behalf of  
SGS Taiwan Ltd.

  
Owen Cheng  
Asst. Manager

TW3922562

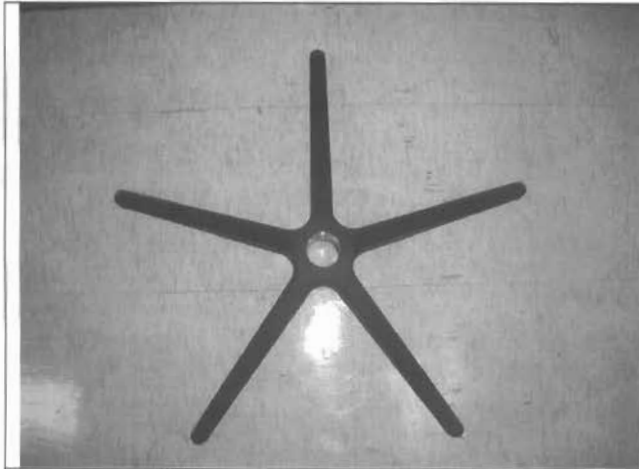
This document is issued by the Company subject to its General Conditions of Service printed overleaf or available on request and accessible at [www.sgs.com](http://www.sgs.com). Attention is drawn to the limitations of liability, indemnification and jurisdictional issues defined therein. Unless otherwise stated, the results shown in this test report refer only to the sample(s) tested. This document cannot be reproduced except in full, without prior approval of the Company. Any unauthorized alteration, forgery or falsification of the content or appearance of this report is unlawful and offenders may be prosecuted to the fullest extent of the law. 此報告是遵照本公司訂定之通用服務條款所製作發放，請注意此條款列印於背面，亦可在[www.sgs.com](http://www.sgs.com)中查閱。將本公司之義務，免責，管轄權皆明確規範之。除非另有說明，此報告結果僅對檢驗之樣品負責。本報告未經本公司書面許可，不可部份複製。對本報告內容或外觀之任何未經授權之變更、偽造、竄改皆屬非法，違犯者將會被依法追訴。

## TEST REPORT

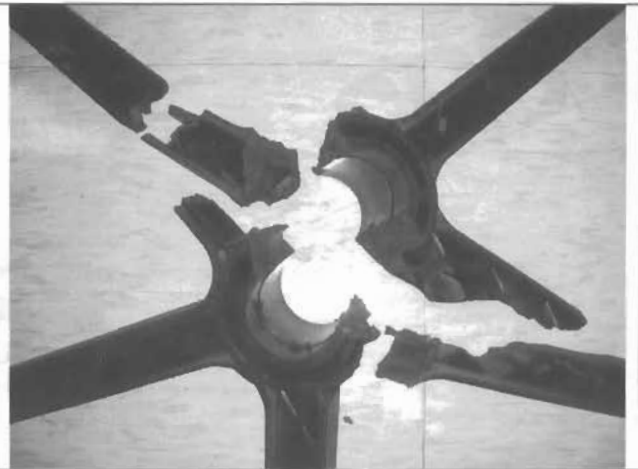
Report No. : HL30030/2007

Page : 2 of 2

– Picture Page –



“Photo A”- Sample Picture



“Photo B”- After Test

---End of Report---

This document is issued by the Company subject to its General Conditions of Service printed overleaf or available on request and accessible at [www.sgs.com](http://www.sgs.com). Attention is drawn to the limitations of liability, indemnification and jurisdictional issues defined therein. Unless otherwise stated, the results shown in this test report refer only to the sample(s) tested. This document cannot be reproduced except in full, without prior approval of the Company. Any unauthorized alteration, forgery or falsification of the content or appearance of this report is unlawful and offenders may be prosecuted to the fullest extent of the law. 此報告是遵循本公司訂定之通用服務條款所製作發放，請注意此條款列印於背面，亦可在[www.sgs.com](http://www.sgs.com)中查閱。將本公司之義務，免責，管轄權皆明確規範之。除非另有說明，此報告結果僅對檢驗之樣品負責。本報告未經本公司書面許可，不可部份複製。對本報告內容或外觀之任何未經授權之變更、偽造、竄改皆屬非法，違犯者將會被依法追訴。

TW 3922734